



FLOOR ART



## About

### ABOUT FLOOR ART

Floor Art, the realisation of our entrepreneurial ambitions, represents our desire to showcase the mastery of Indian, Nepalese and Tibetan craftsmen in the production and design of contemporary Rugs.

At Floor Art, we own our manufacturing and weaving units. As a result, we are able to ensure that only the most experienced craftsmen with the highest level of skill weave our products. Every little detail from the wool we use, to the right mix of colours, is carefully adhered to ourselves. So we can assure our customers that when they deal with Floor Art, they can always expect a product of the highest quality.

Based between Bombay, Kathmandu and London, we spend a great deal of our time travelling, in order to constantly identify the latest global trends. Consequently, we're able to bring you carpets that reflect the ever-changing nature of the contemporary design scene.

We're passionate about what we do, and almost obsessive about the details; and this fervour means that our designs, like our quality, are unmatched.

So go ahead and acquaint yourself with Floor Art.



# Hand Knotted Rugs



Sage: Tibetan Handknotted 100 knots in Banana Silk





Mahogany: Tibetan Handknotted 80 knots in New Zealand Wool

6



7

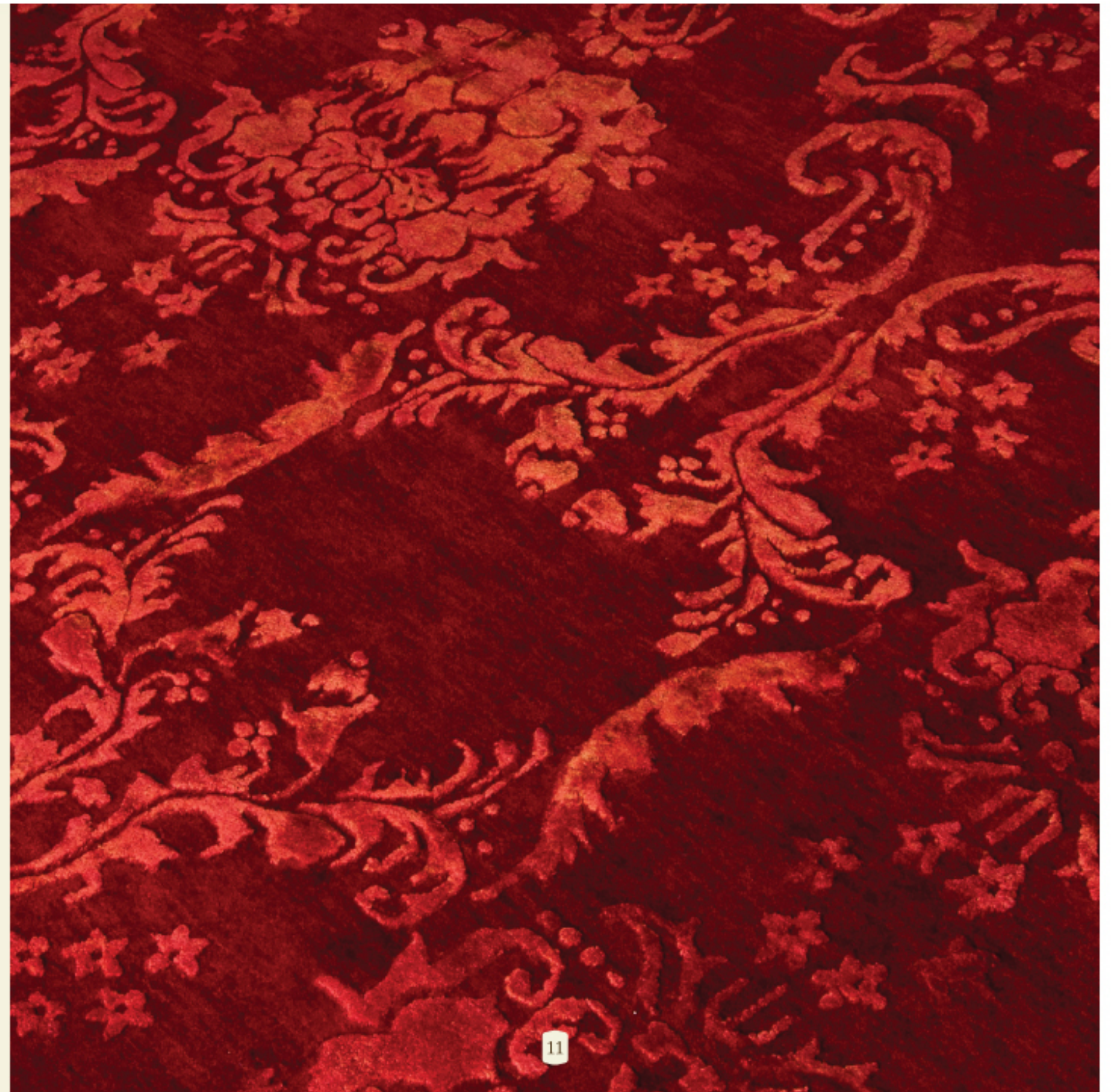


Blue Passion: Handknotted in Blended Silk



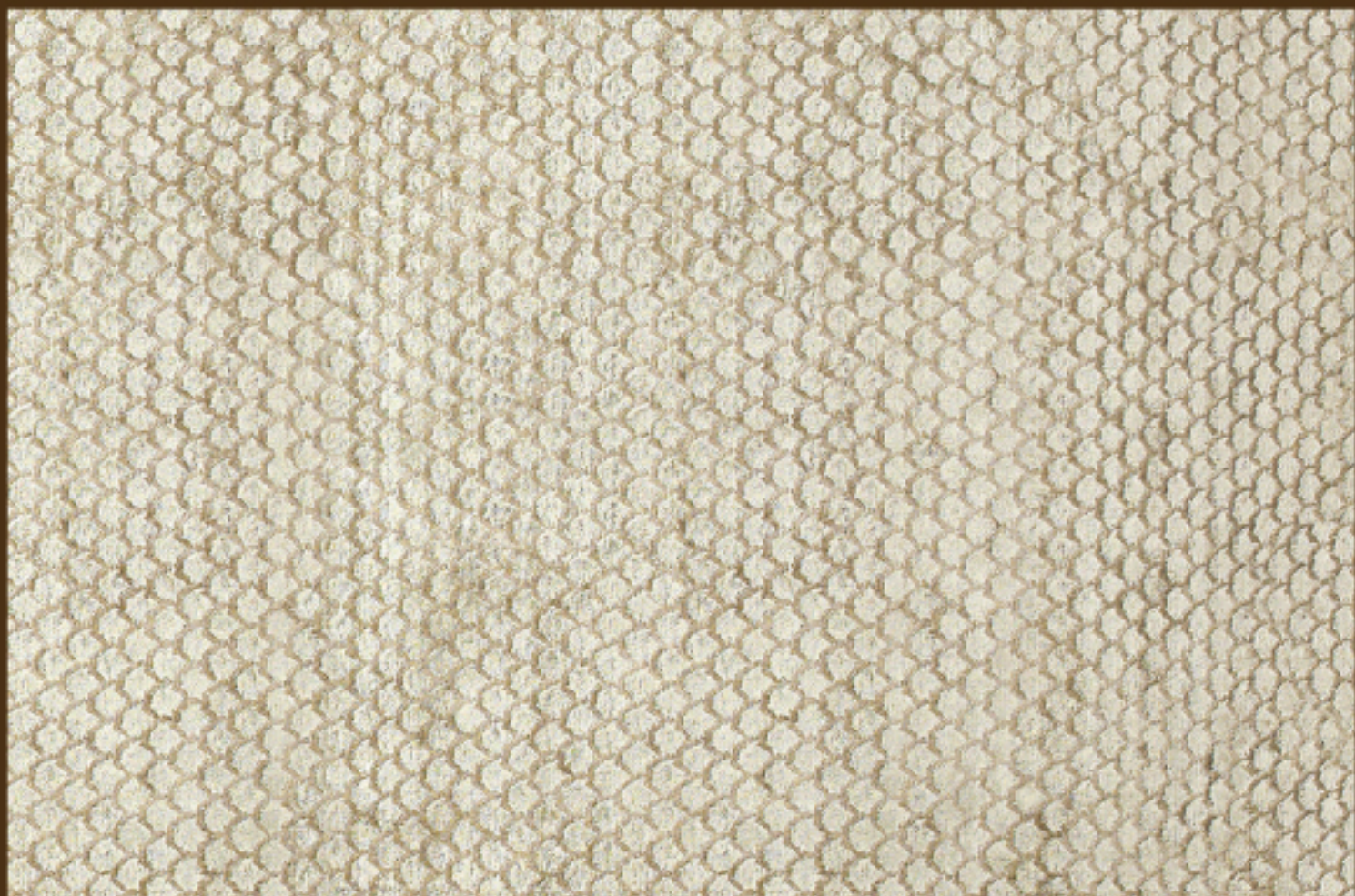


Cassia: Persian Handknotted in New Zealand Wool and Pure Silk









Foxglove: Hand knotted in bamboo silk

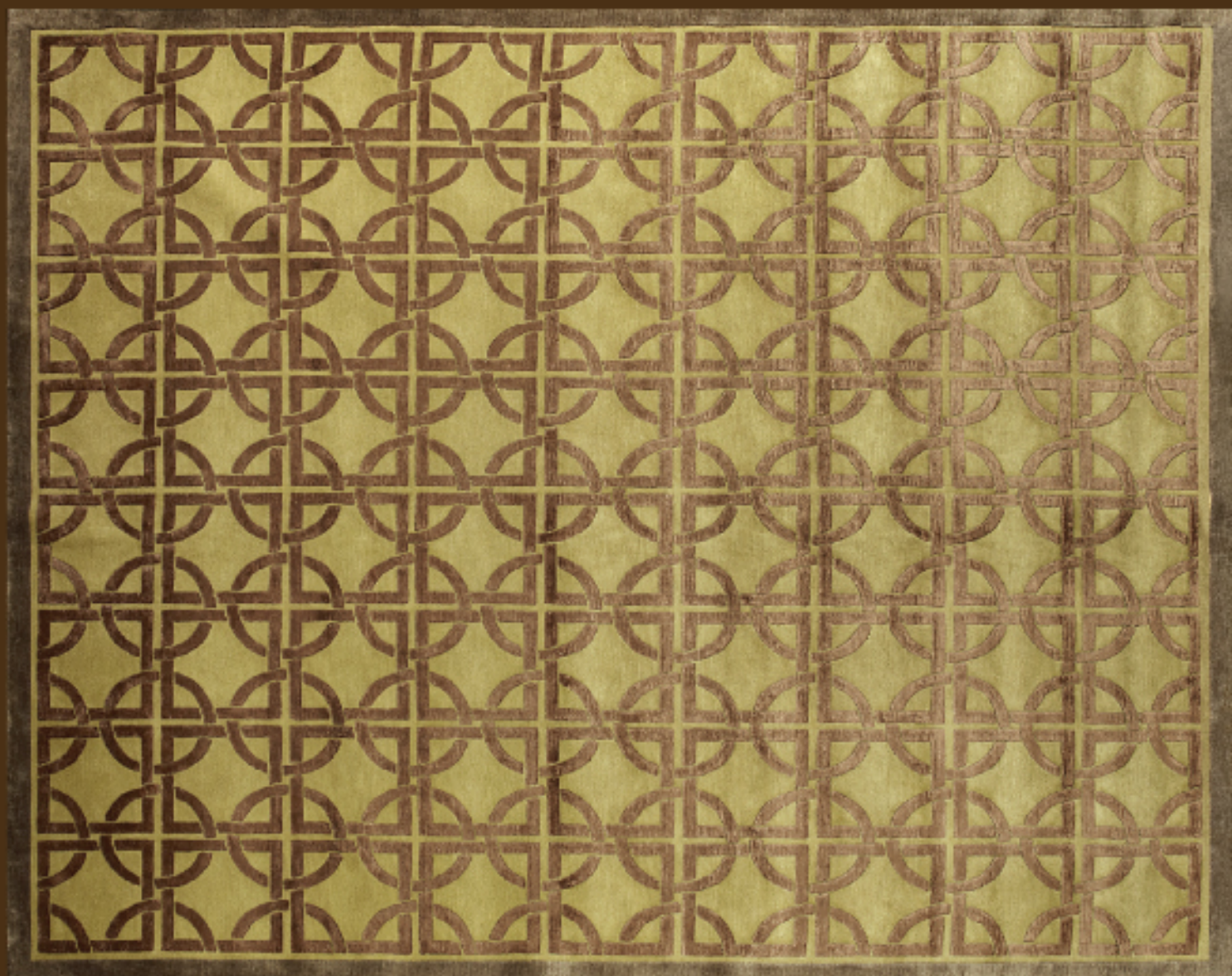




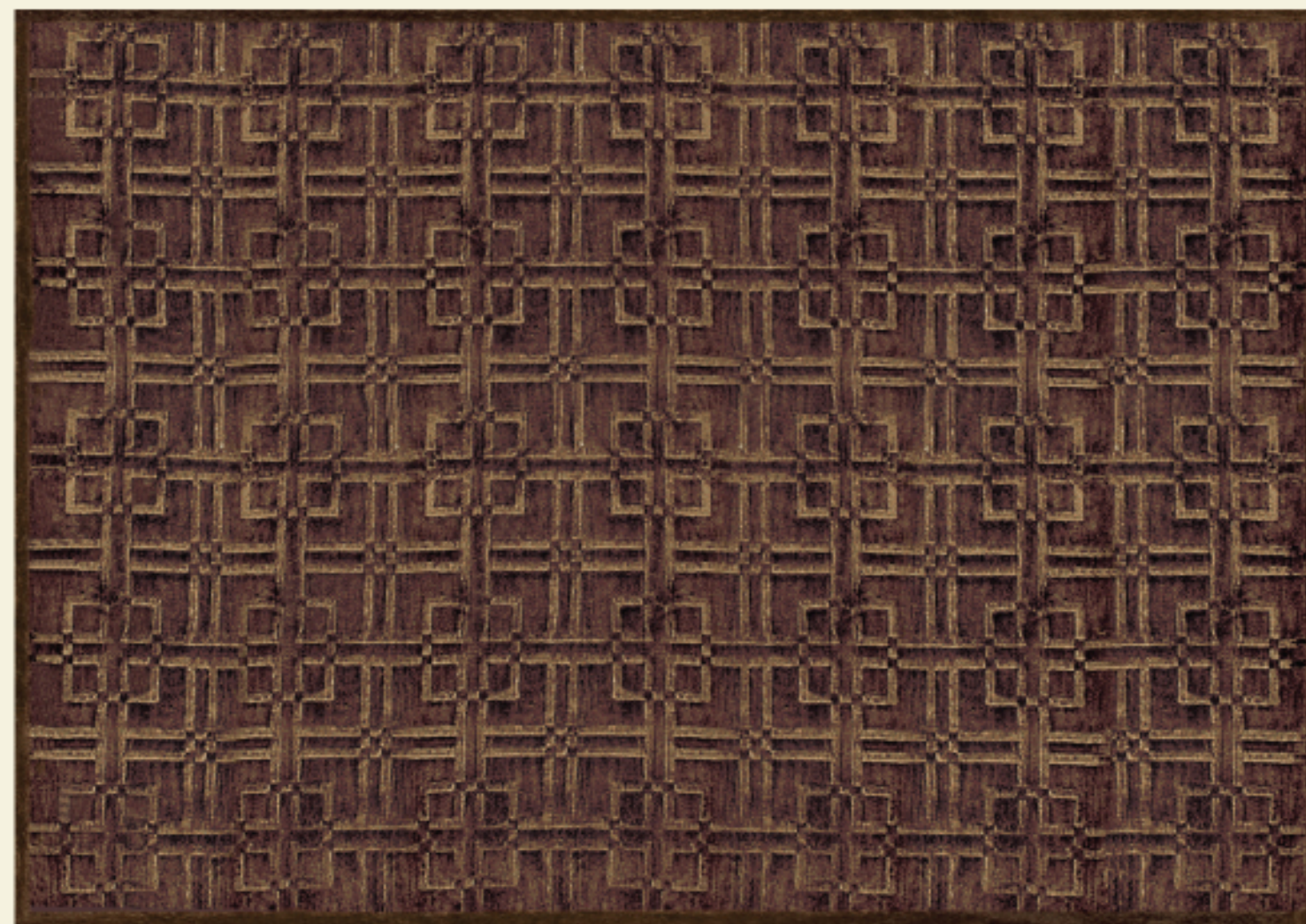
Alpinia: Hand knotted in New Zealand wool and blended silk



Azalea: Hand knotted in semi-worsted New Zealand wool and blended silk



Frangipani: Hand knotted in semi-worsted New Zealand Wool and blended silk



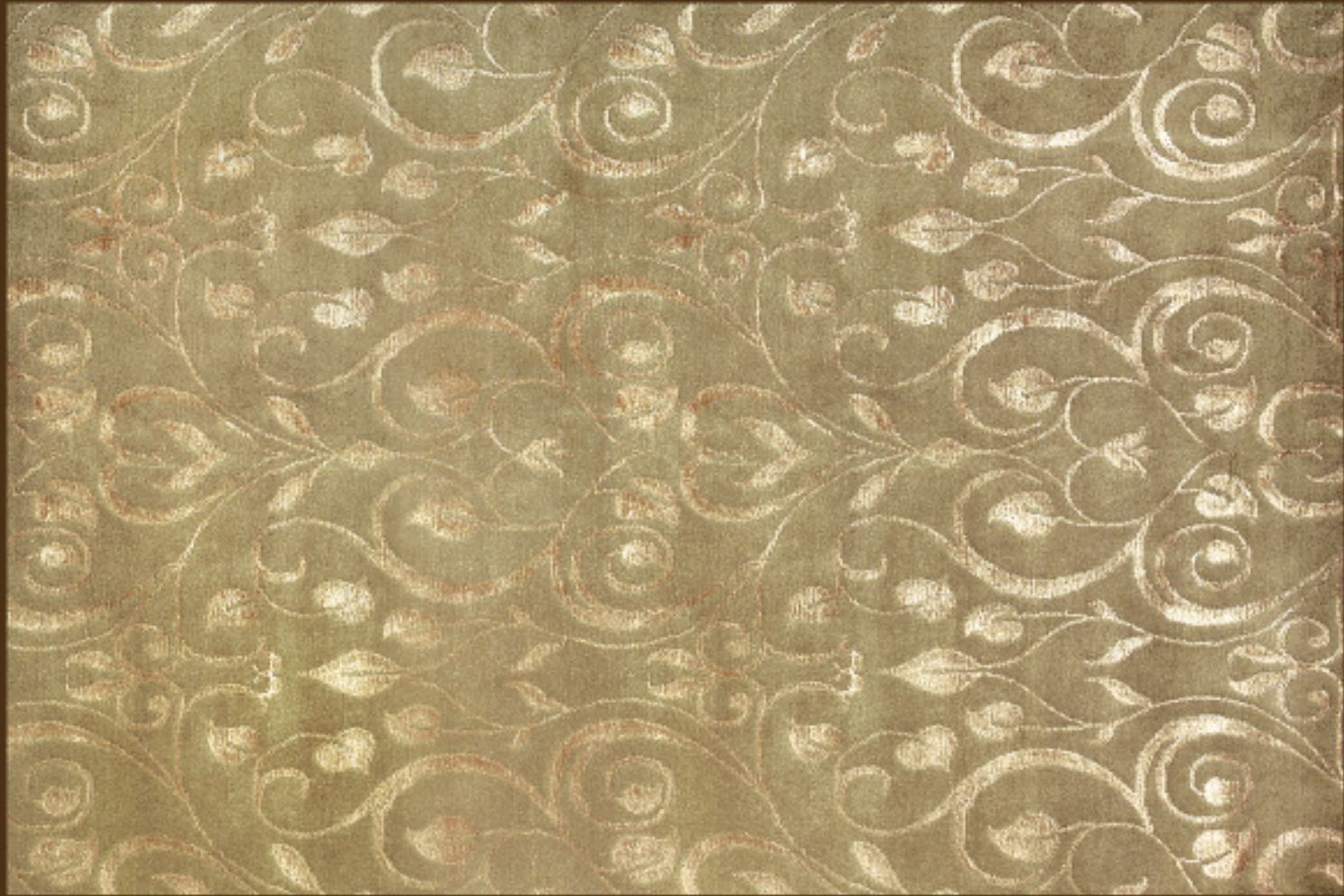
Cosmos: Hand knotted in semi-worsted New Zealand Wool and blended silk



Ginger: Hand knotted in semi-worsted New Zealand Wool



Gardenia: Tibetan hand knotted 60 knots in banana silk



Begonia: Hand knotted in New Zealand wool and blended silk





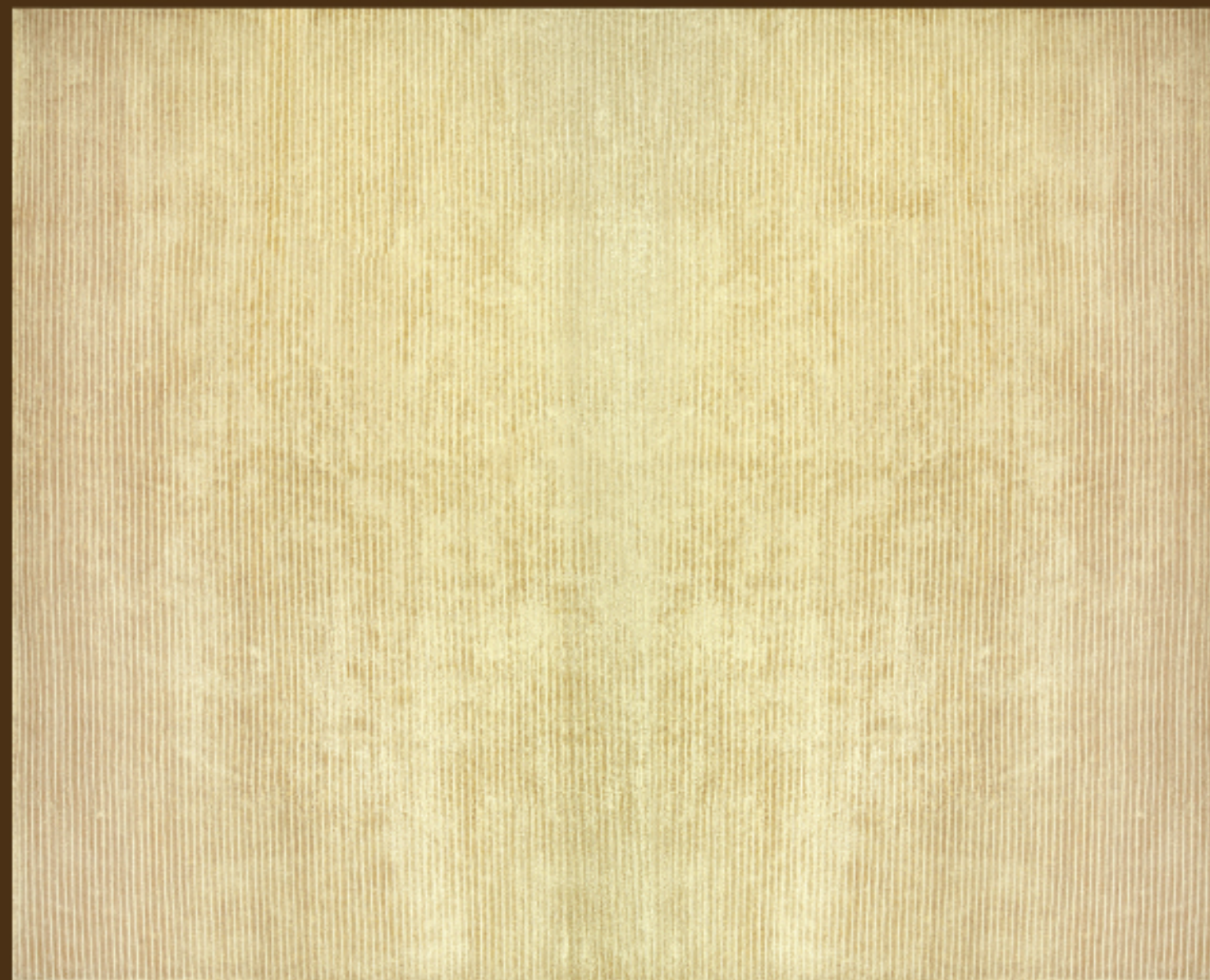
Bluebell: Hand knotted in New Zealand wool and blended silk



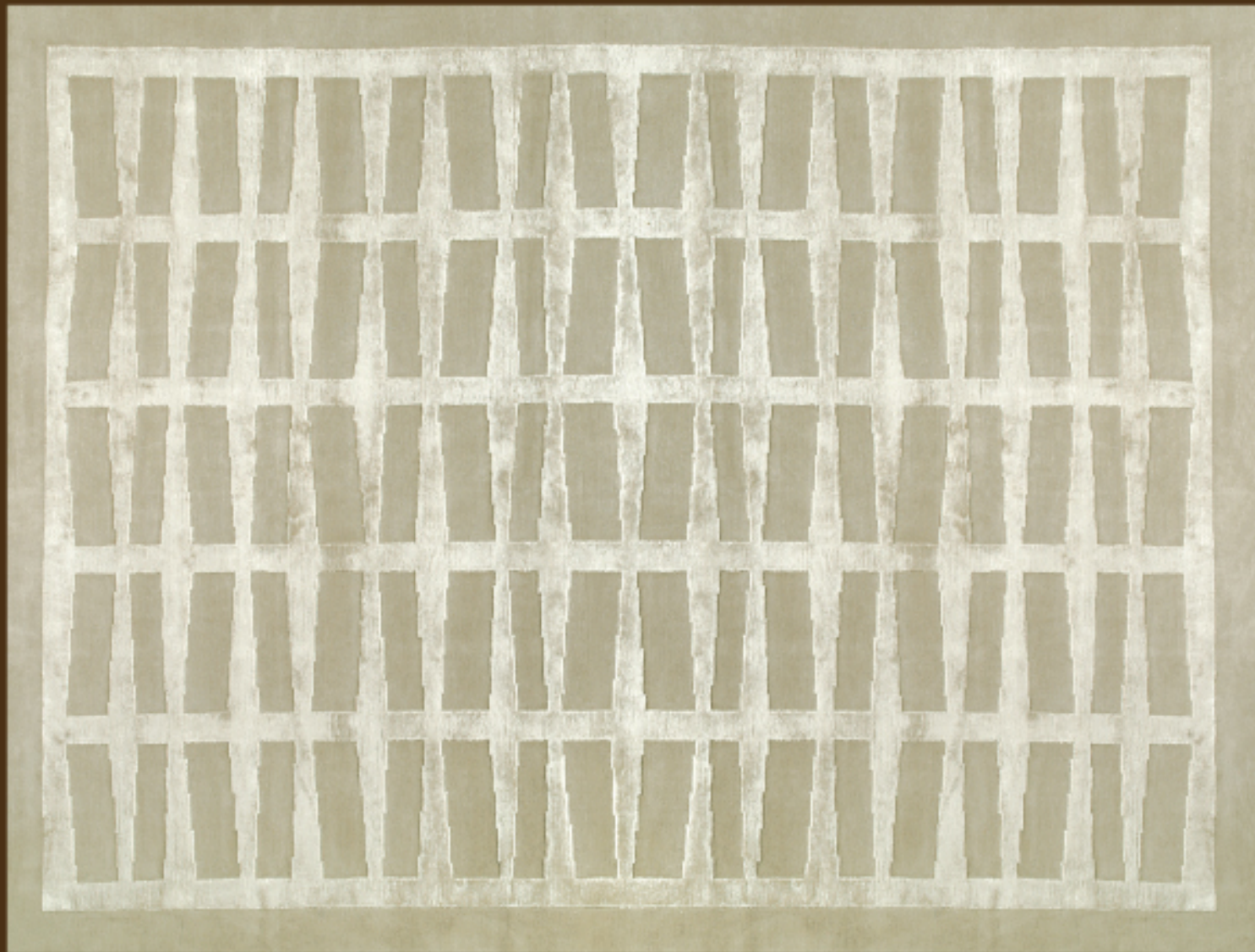
Adonis: Hand knotted in semi-worsted New Zealand Wool



Nolana: Hand knotted in semi-worsted New Zealand Wool and blended silk



Hosta: Tibetan hand knotted 60 knots in banana silk



Dahlia: Hand knotted in New Zealand wool and blended silk

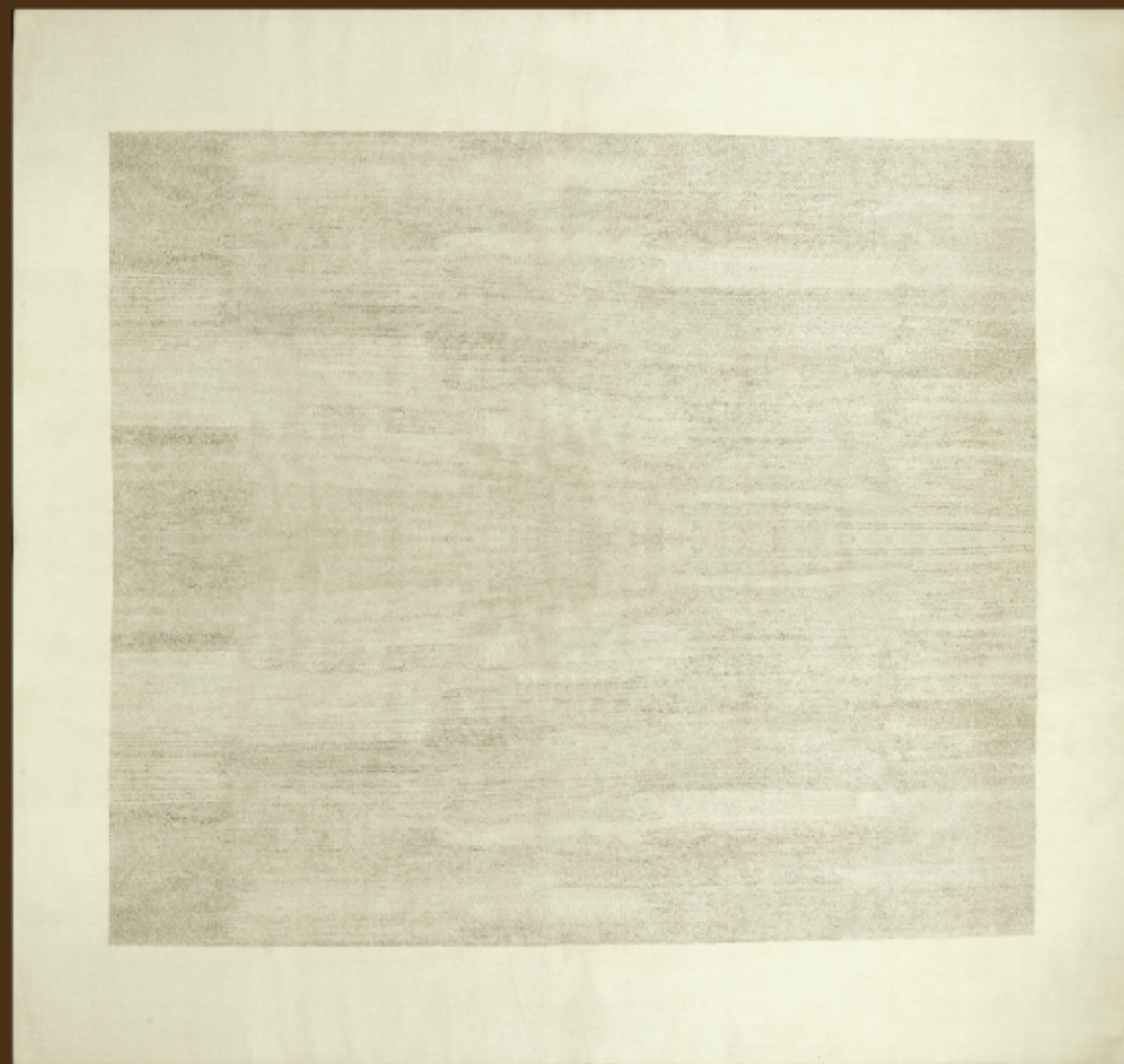








Iris: Hand knotted in matt silk



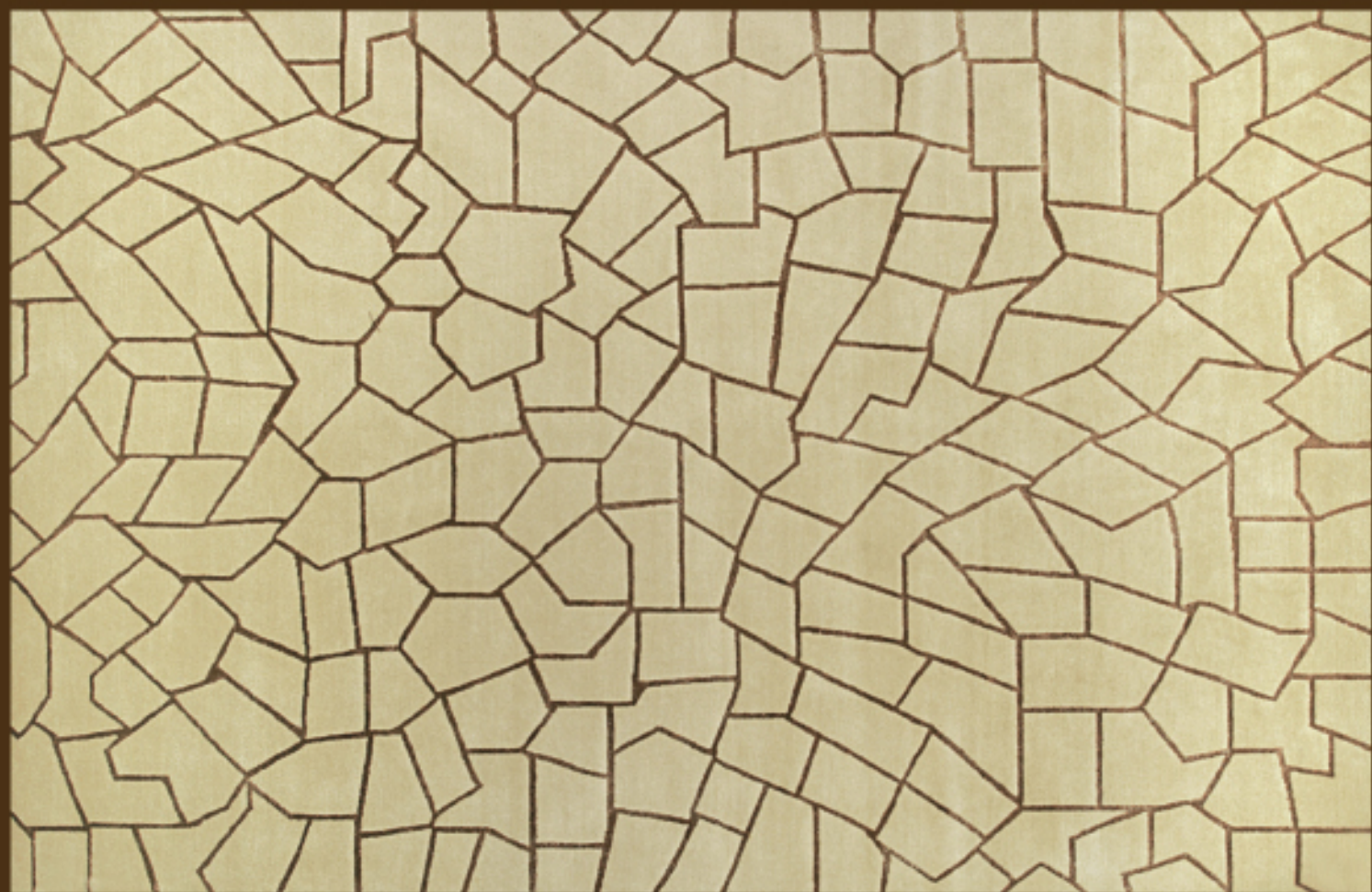
Ivy: Tibetan hand knotted 60 knots in New Zealand wool and ortie



Camelia: Tibetan hand knotted 60 knots in New Zealand wool and banana silk



Aster: Tibetan hand knotted 100 knots in Tibetan wool



Balsa: Tibetan hand knotted 100 knots in New Zealand wool and banana silk



Morning Glory: Hand knotted in semi-worsted New Zealand Wool and blended silk



Lotus: Handknotted in Blended Silk

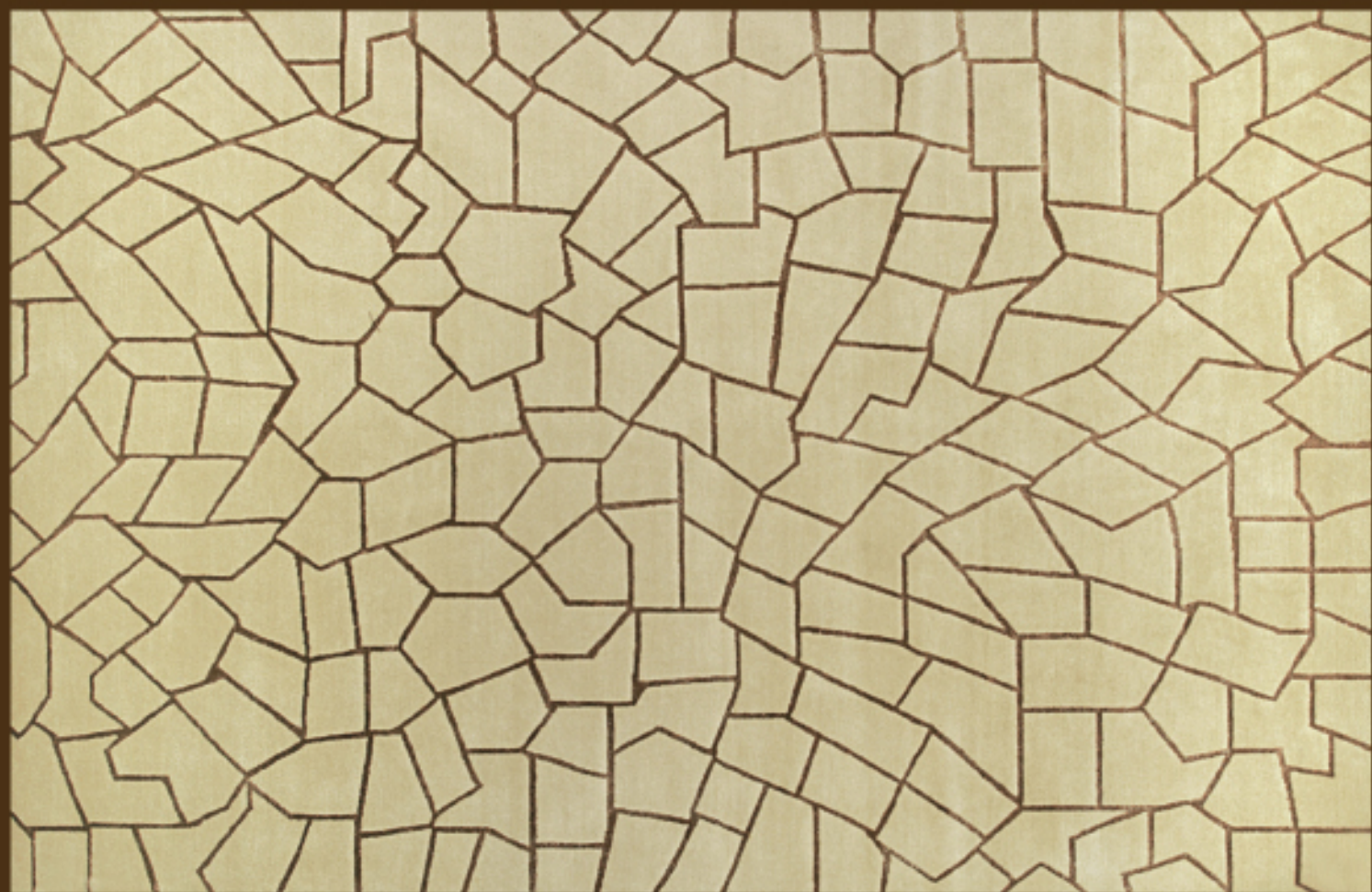




Bouvardia: Hand knotted in New Zealand wool and blended silk



Lily: Hand knotted in blended silk



Balsa: Tibetan hand knotted 100 knots in New Zealand wool and banana silk



Morning Glory: Hand knotted in semi-worsted New Zealand Wool and blended silk



Portea: Tibetan hand knotted 60 knots in ortie

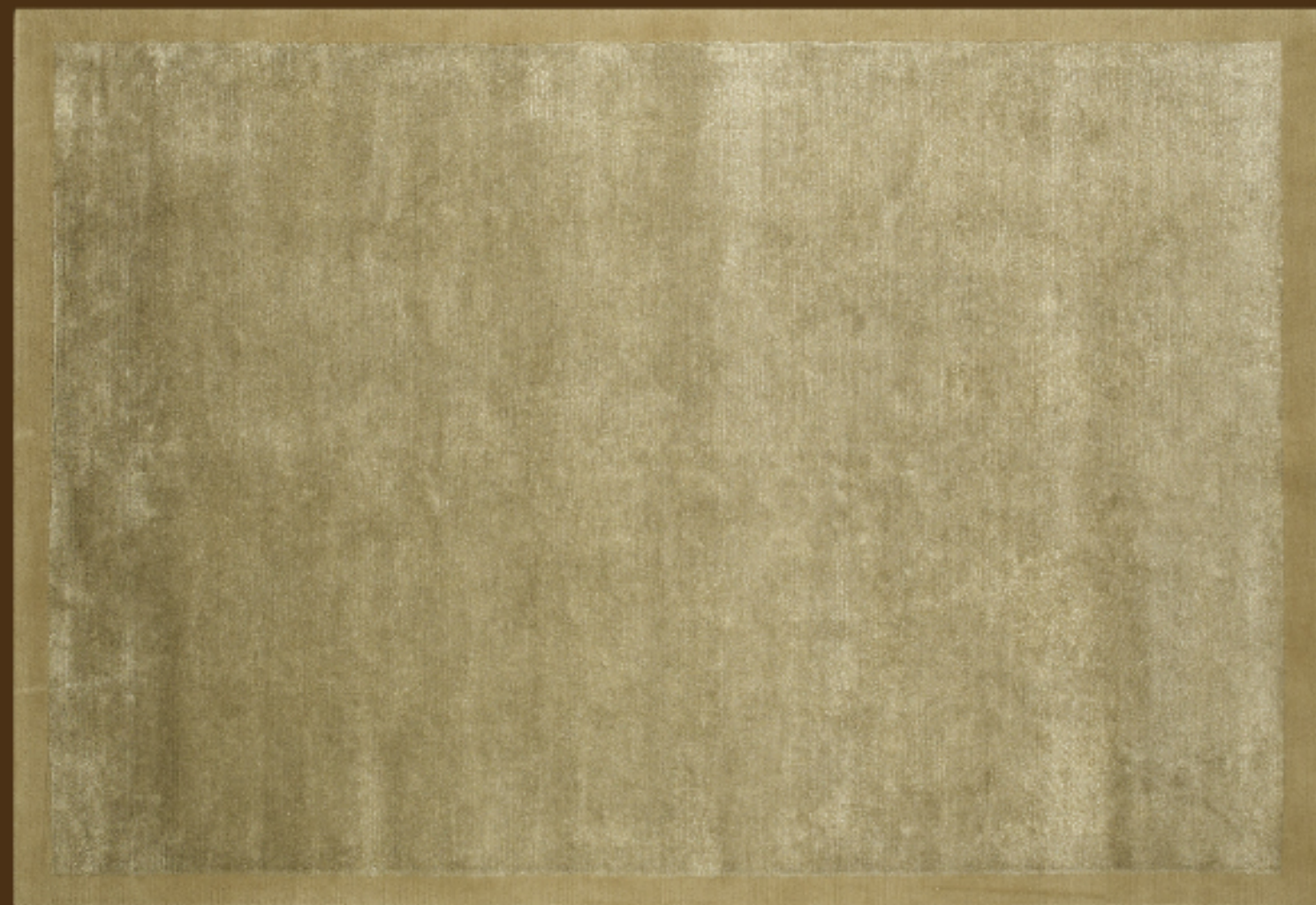


Almeria White: Hand knotted in semi-worsted New Zealand Wool and blended silk





Chicago White: Hand knotted in New Zealand wool and blended silk



Heather: Tibetan hand knotted 60 knots in linen and banana silk with a New Zealand wool border



Nigella: Hand knotted in semi-worsted New Zealand Wool and blended silk



Magnolia: Hand knotted in blended silk



Basil: Hand knotted in semi-worsted New Zealand wool and blended silk





Star Dust: Tibetan Handknotted 60 knots in Banana Silk in







Aloe: Tibetan Hand Knotted 60 knots in Ortie and Raw Silk





Hyacinth: Handknotted in New Zealand Wool





Medallia: Handknotted in New Zealand Wool







Petunia: Indo-Tibetan Handknotted in New Zealand Wool and Blended Silk





Manchester multi: Hand knotted in New Zealand wool





Alisma: Tibetan Hand Knotted 100 knots in Ortie and Raw Silk



A photograph of a historic stone room with a hand-tufted rug. The room features a vaulted brick ceiling, a red-painted lower wall section, and a stone ledge. A large, patterned rug is laid out on the floor. The text "Hand Tufted Rugs" is overlaid in white on a semi-transparent dark background in the upper right portion of the image.

# Hand Tufted Rugs

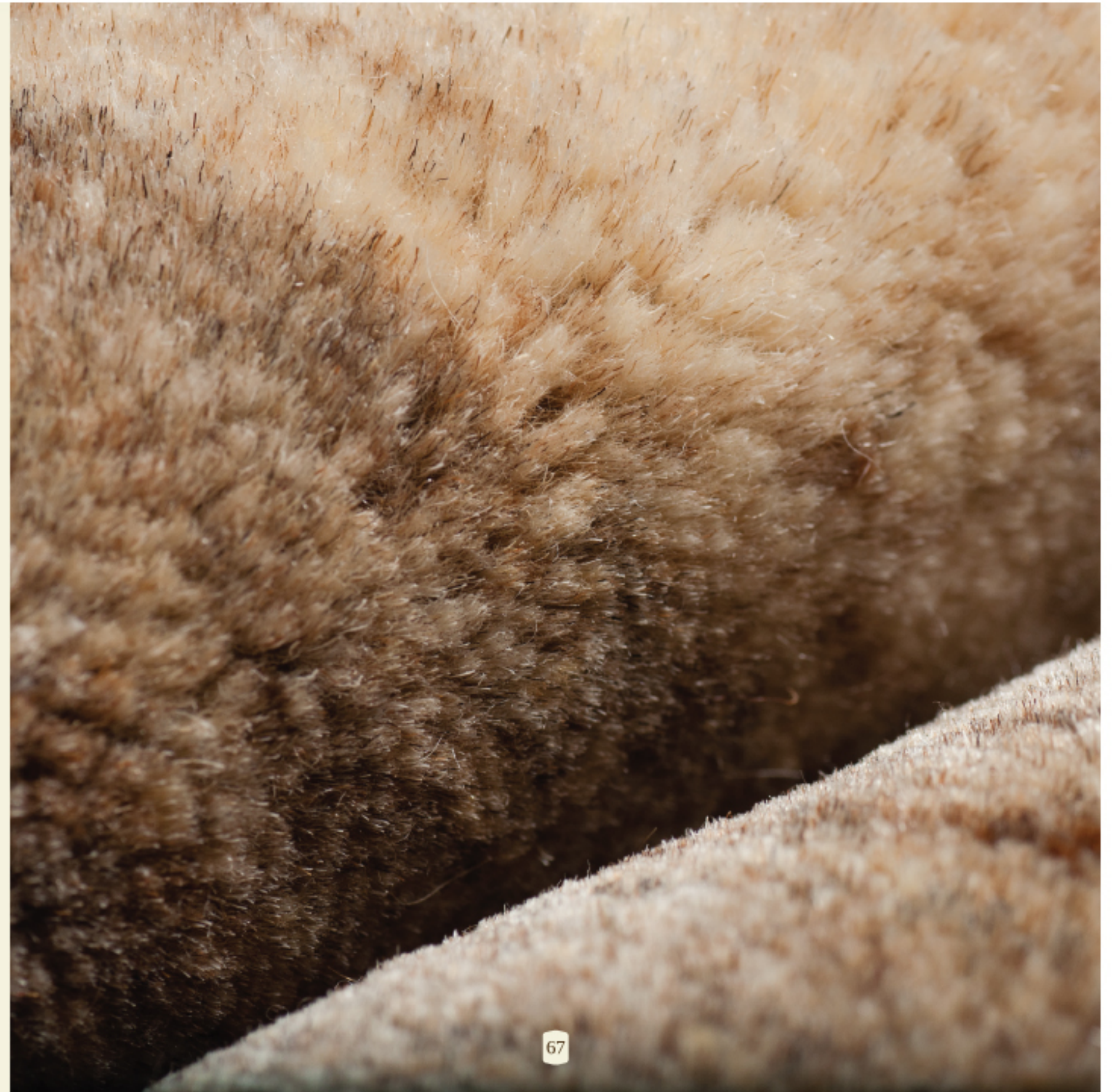


Thyme: Hand Tufted in Blended Silk





Columbine: Hand Tufted in Natural Wool







Lunaria: Hand Tufted in Semi Worsted New Zealand Wool and Blended Silk









Sumac: Hand tufted in blended silk





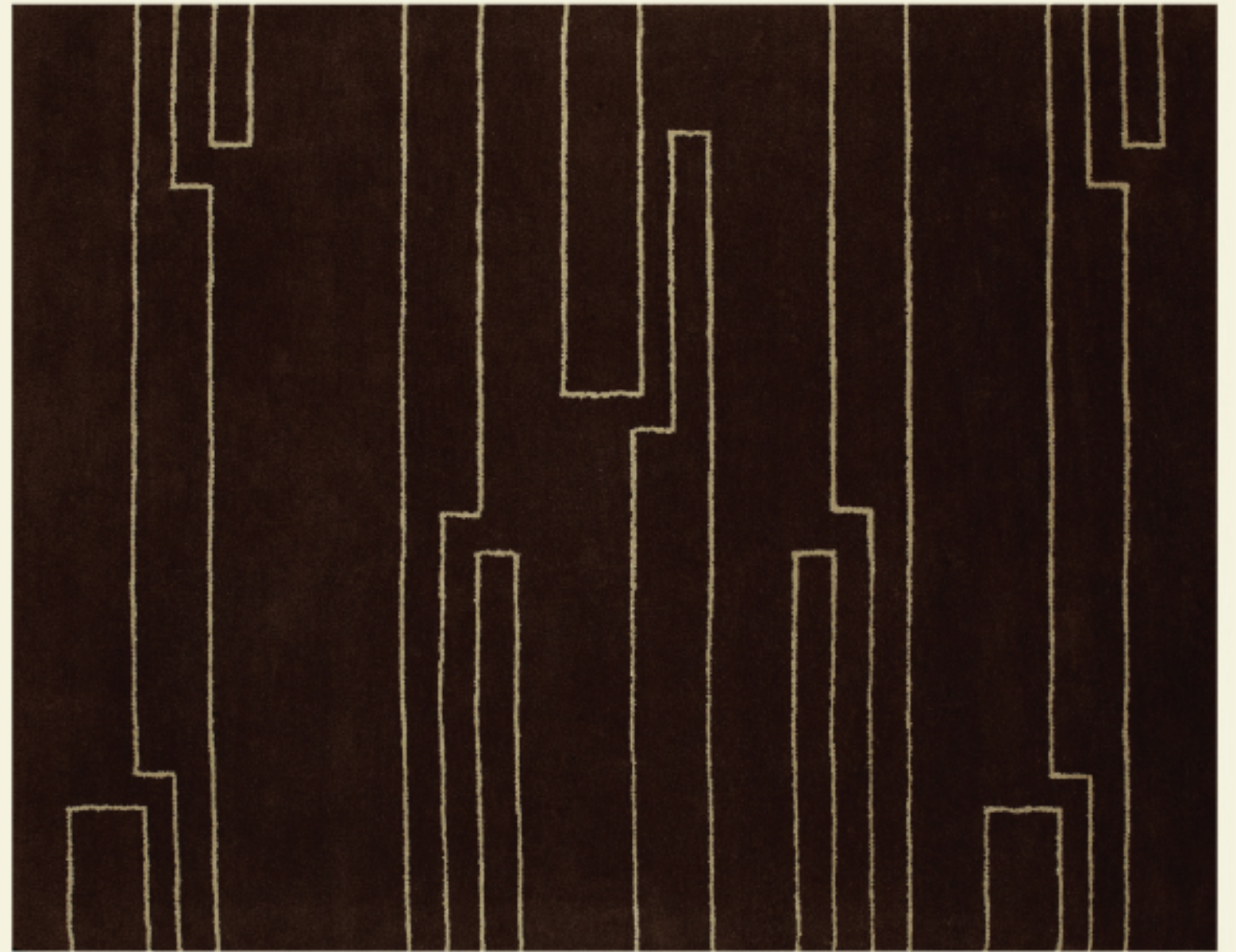
Redbud: Hand tufted in New Zealand wool



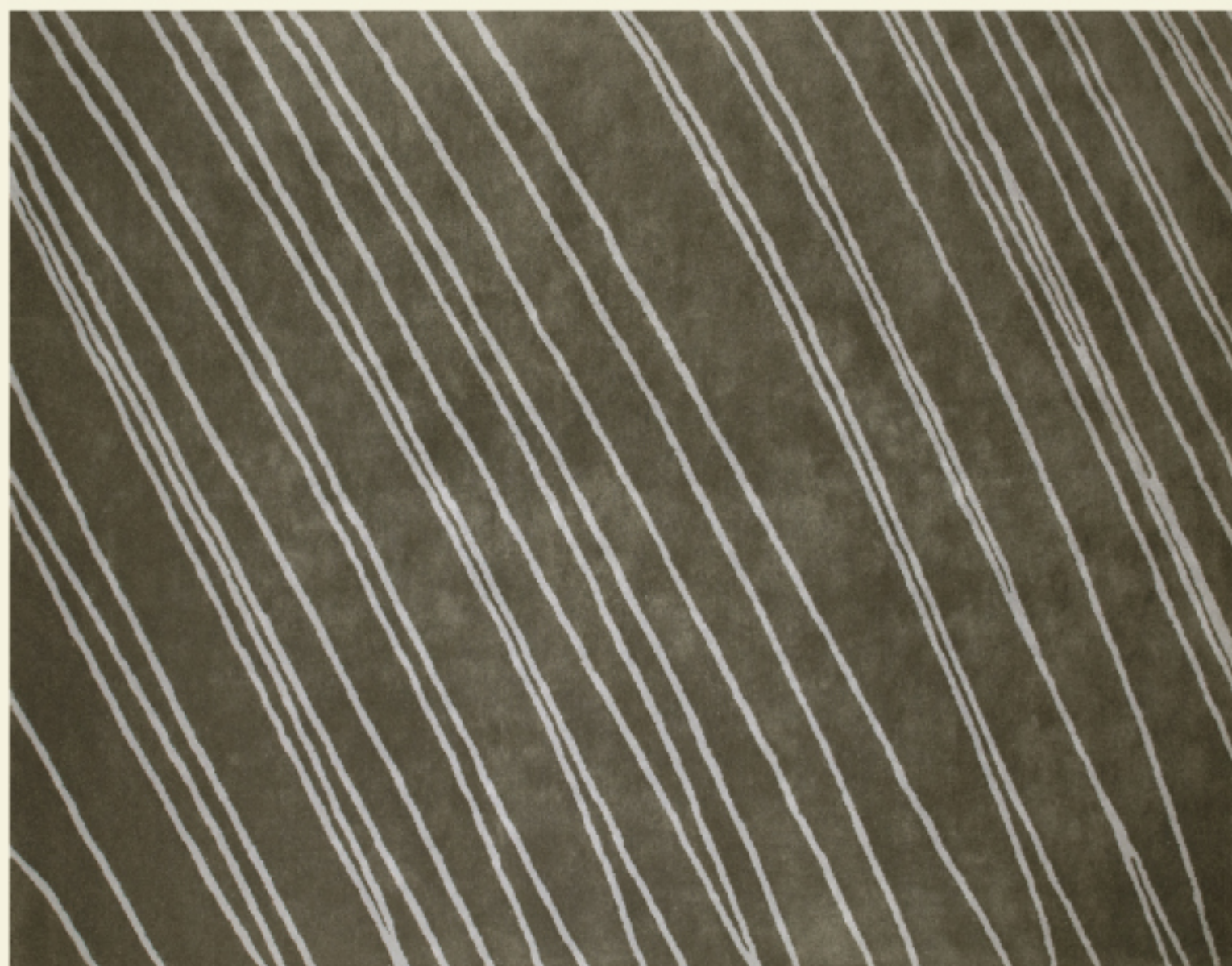
Zinnia: Hand tufted in New Zealand wool



Ohelo: Hand tufted in semi-worsted New Zealand wool



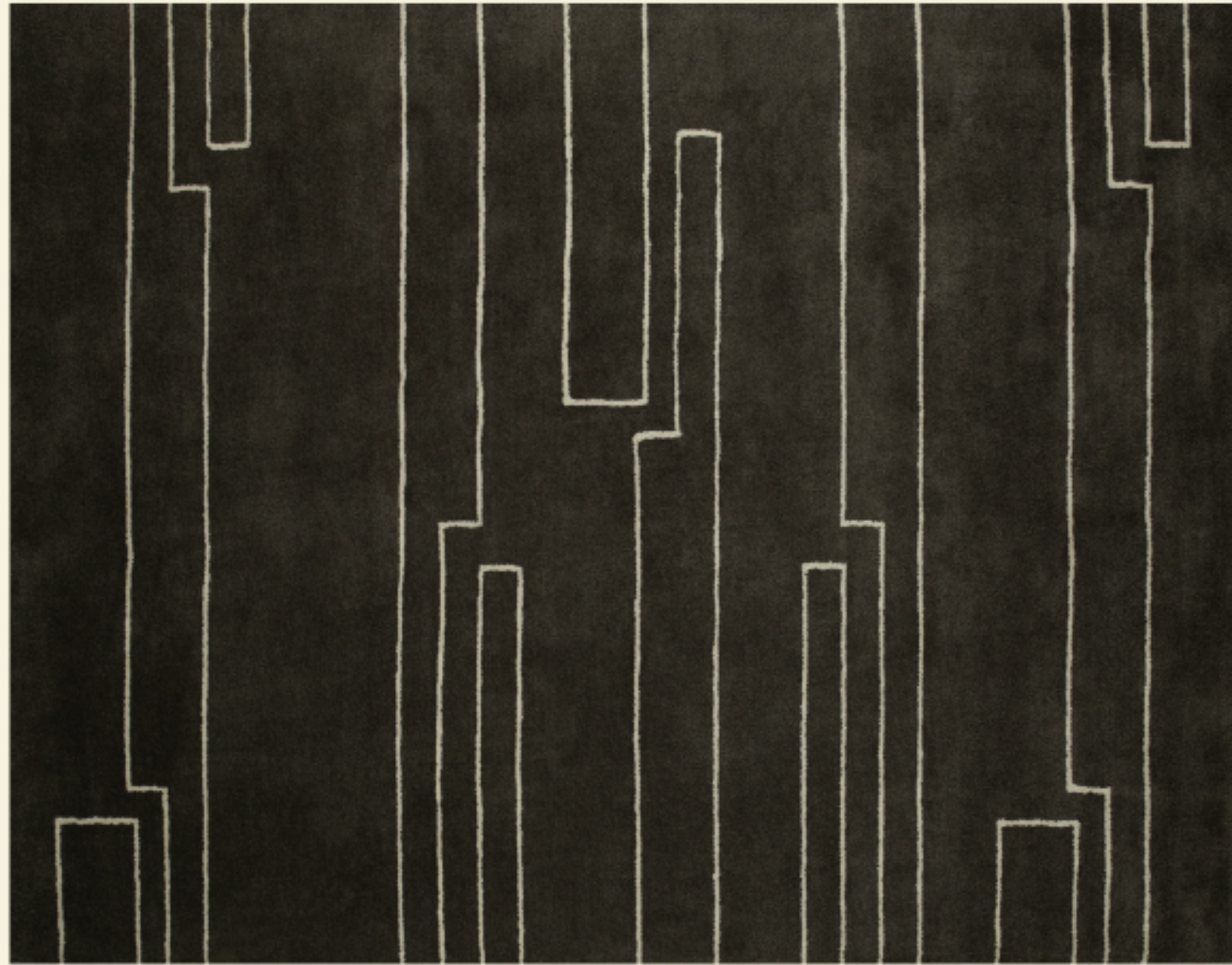
Viola: Hand tufted in New Zealand wool



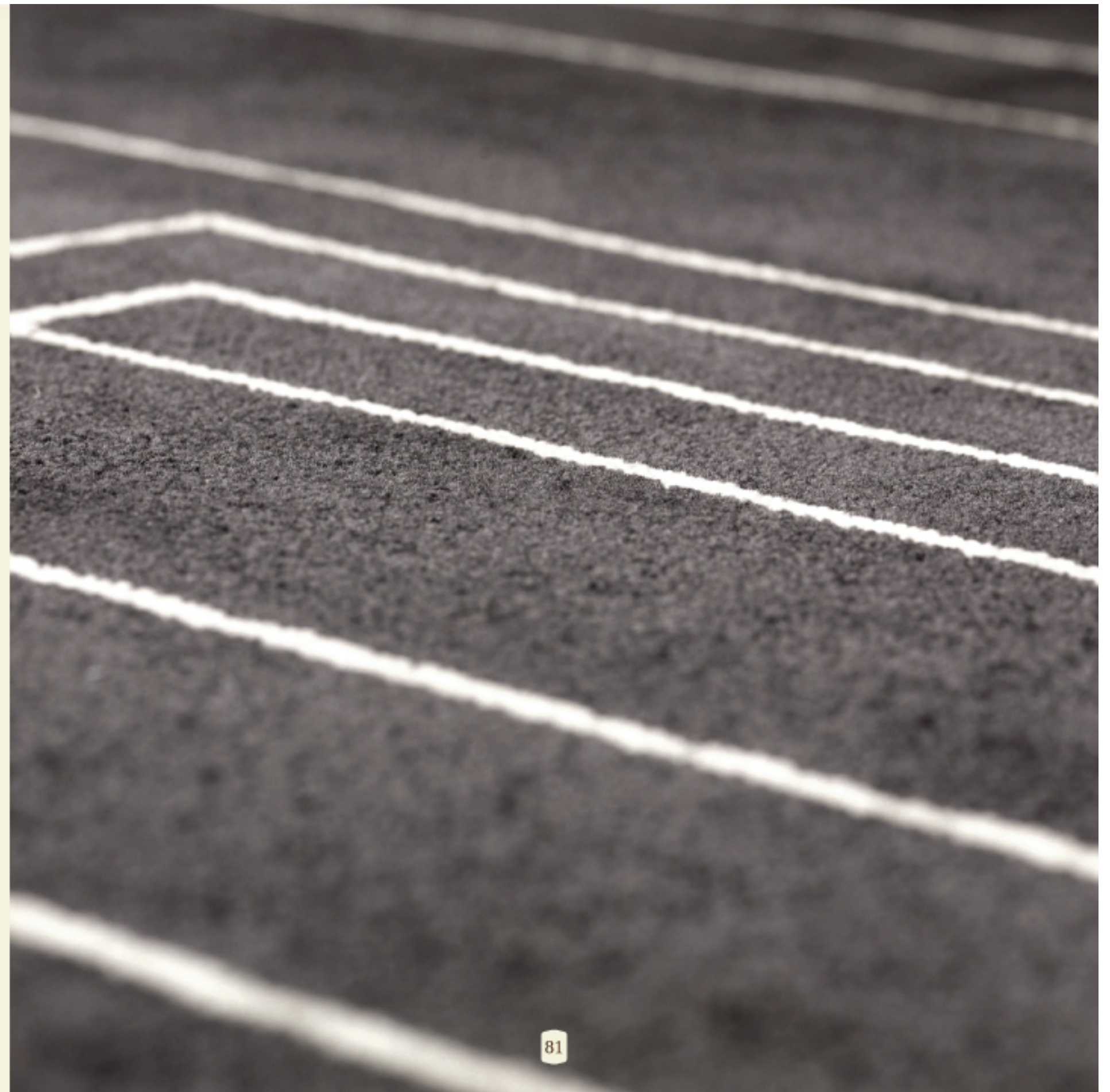
Orchid: Hand tufted in New Zealand wool



Vinca: Hand tufted in New Zealand wool



Lupine: Hand tufted in New Zealand wool





Thisle: Hand tufted in New Zealand wool



Poppy: Hand tufted in wool



Heliotrope: Super tufted in New Zealand wool and blended silk



Stonecrop: Super tufted in New Zealand wool and blended silk





Coral: Hand tufted in New Zealand wool



Peony: Hand tufted in wool and blended silk



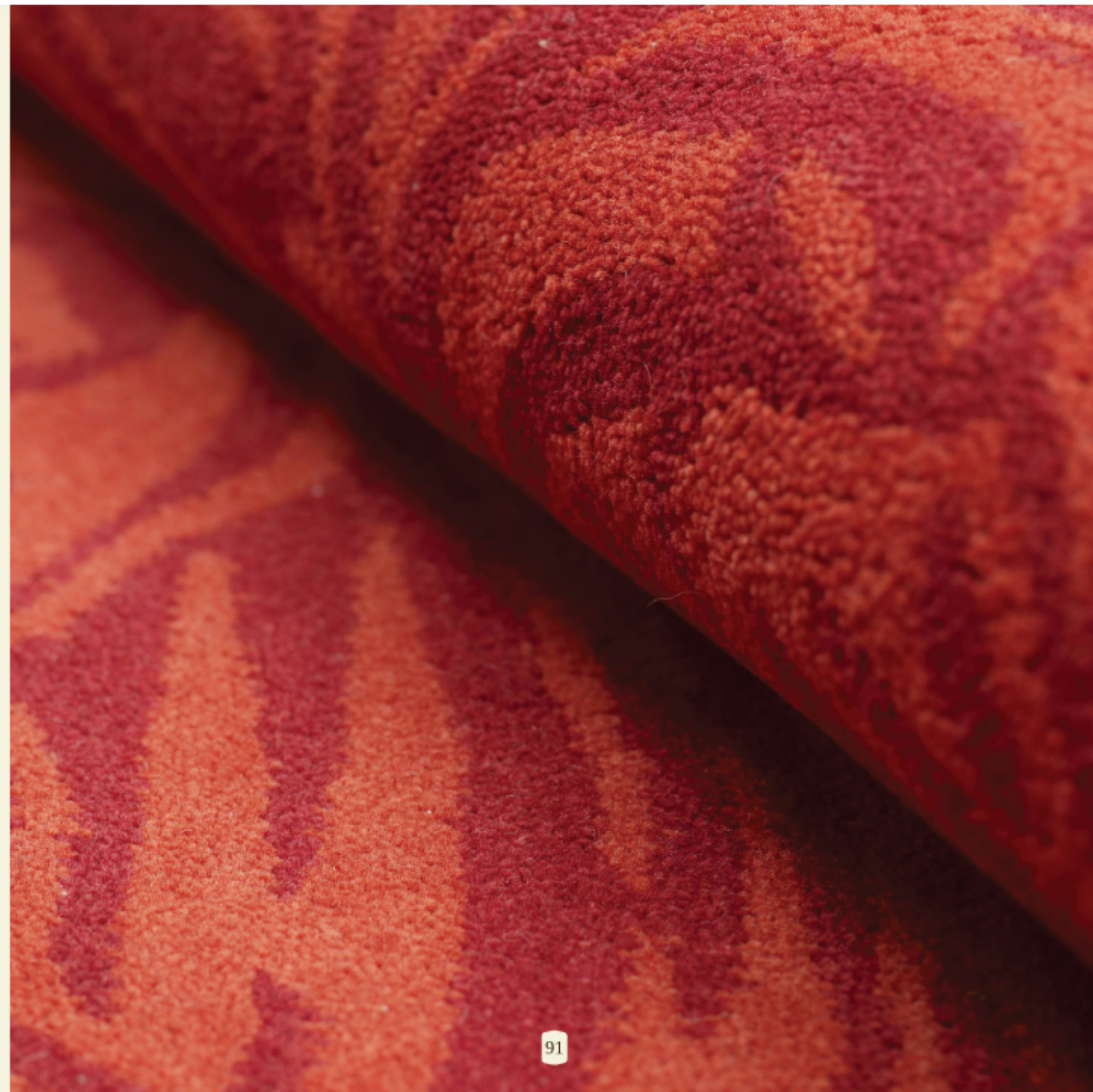
Regal Lily: Hand tufted in wool



Holly: Hand tufted in New Zealand wool

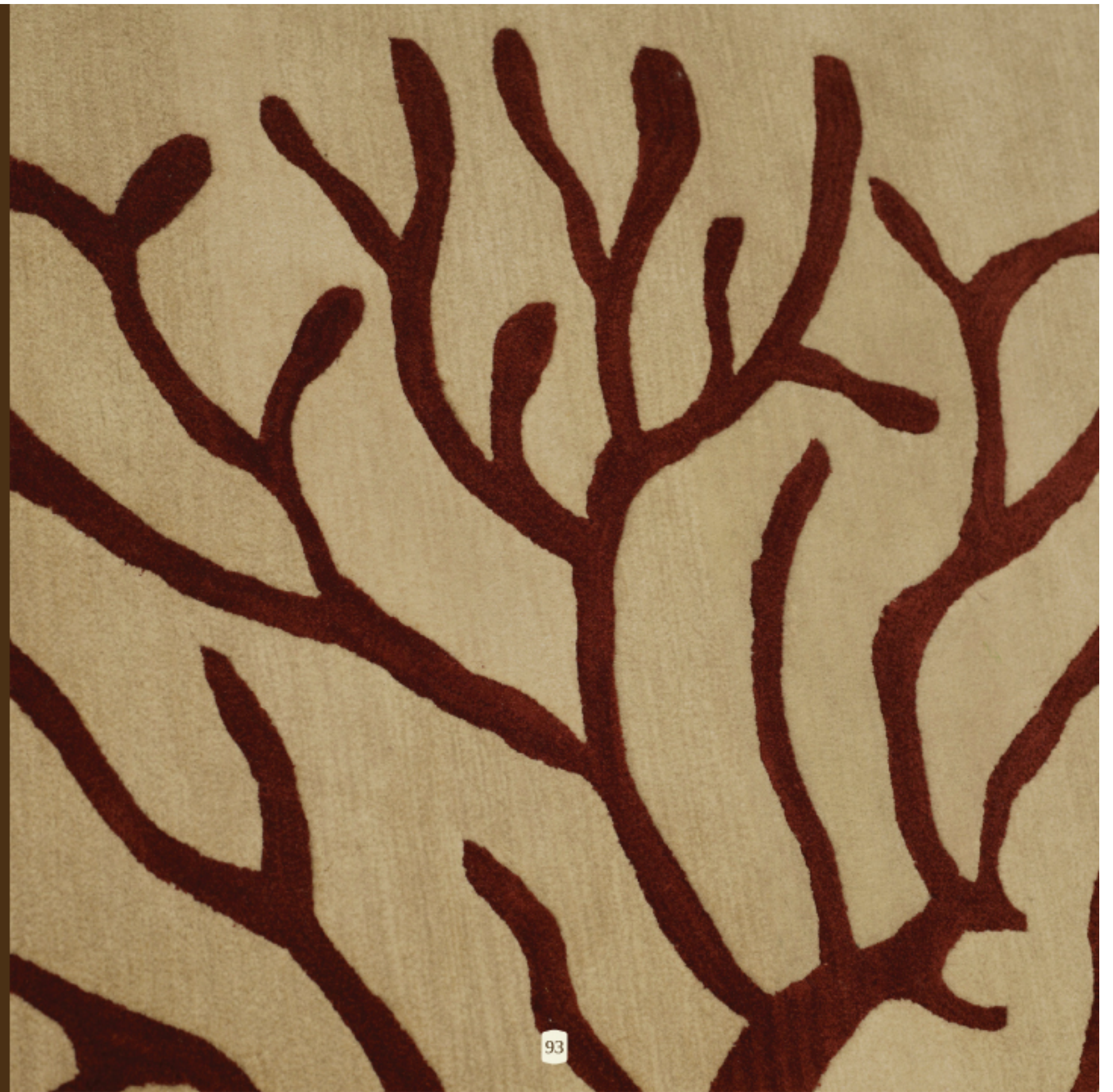


Sweet pea: Hand tufted in New Zealand wool





Primrose: Hand tufted in semi-worsted New Zealand wool





Mimosa: Hand tufted in New Zealand wool



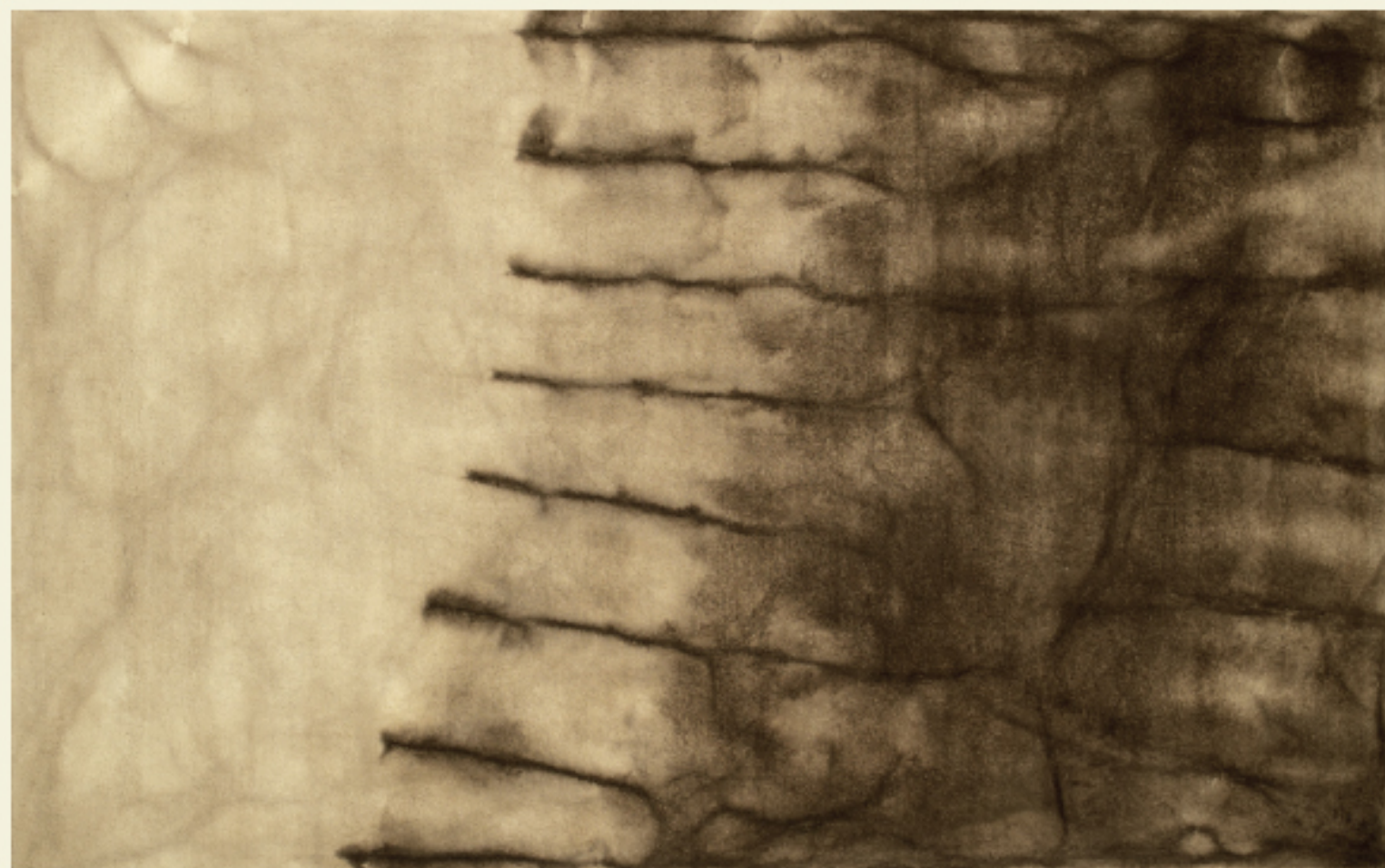
Mulberry: Hand tufted in semi-worsted New Zealand wool and blended silk



Aspen Grey: Hand tufted in New Zealand wool



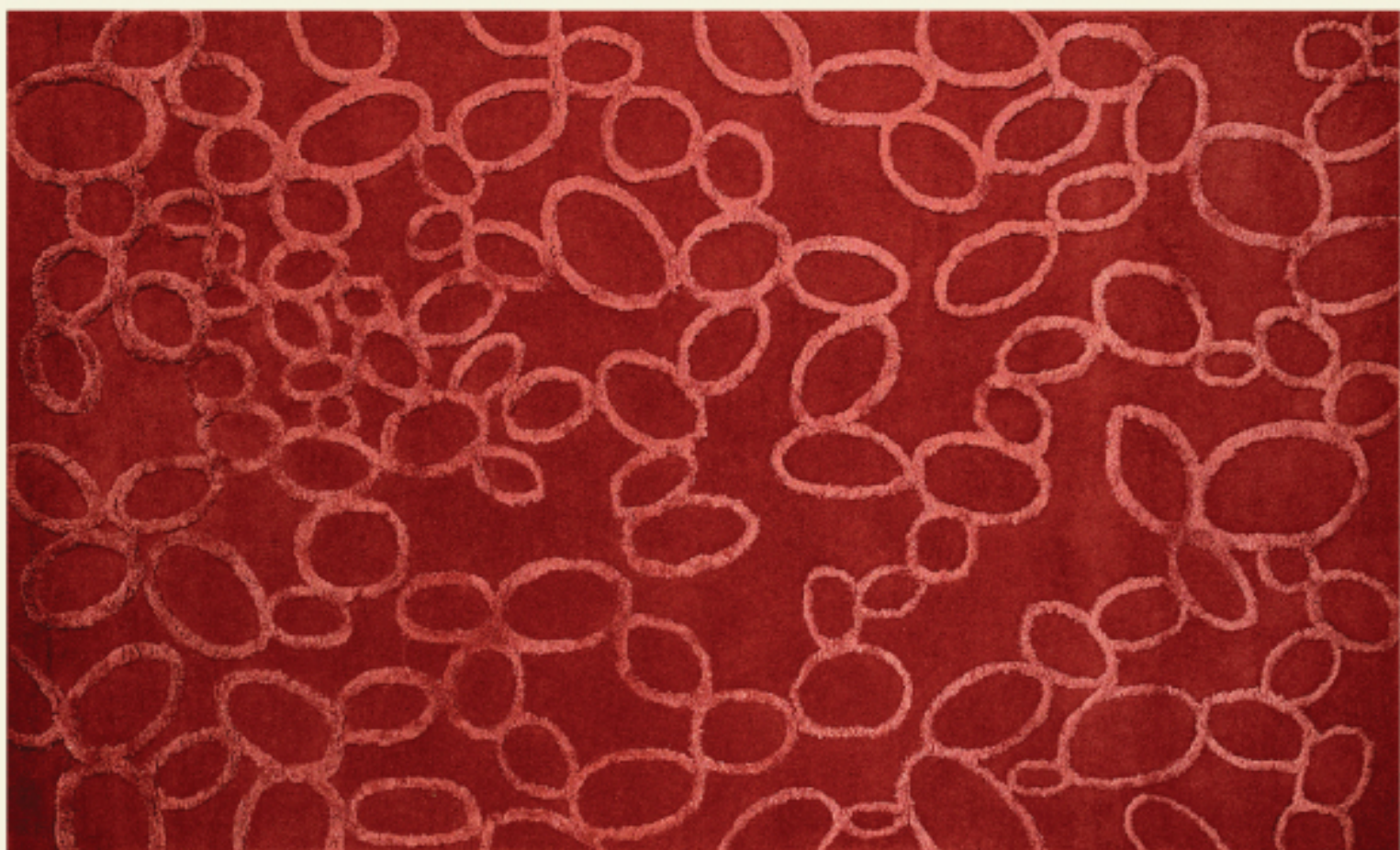
Portland White: Hand tufted in New Zealand wool



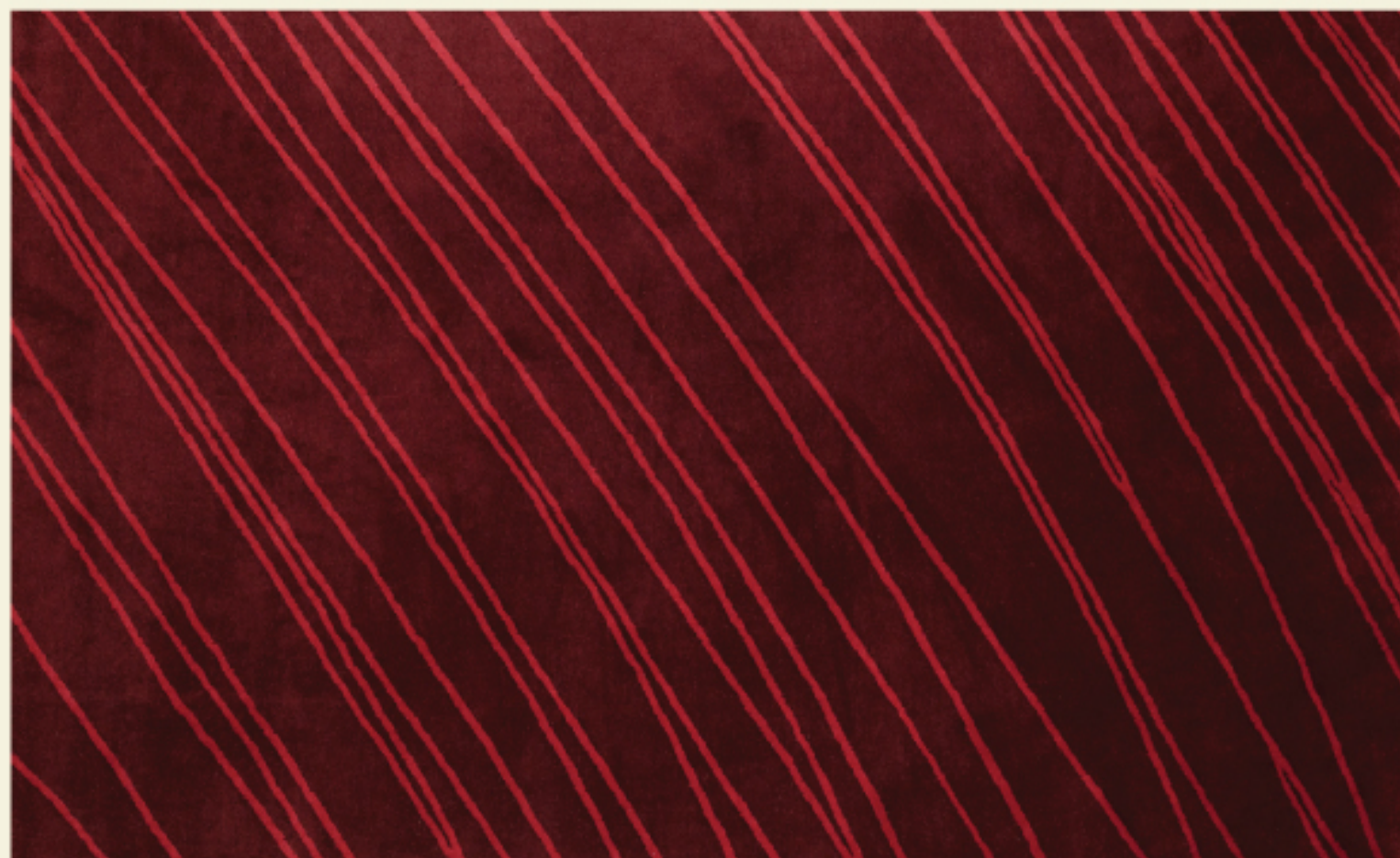
Daffodil: Hand tufted in wool



Freesia: Hand tufted in wool and blended silk



Banksia: Hand tufted in New Zealand wool and blended silk

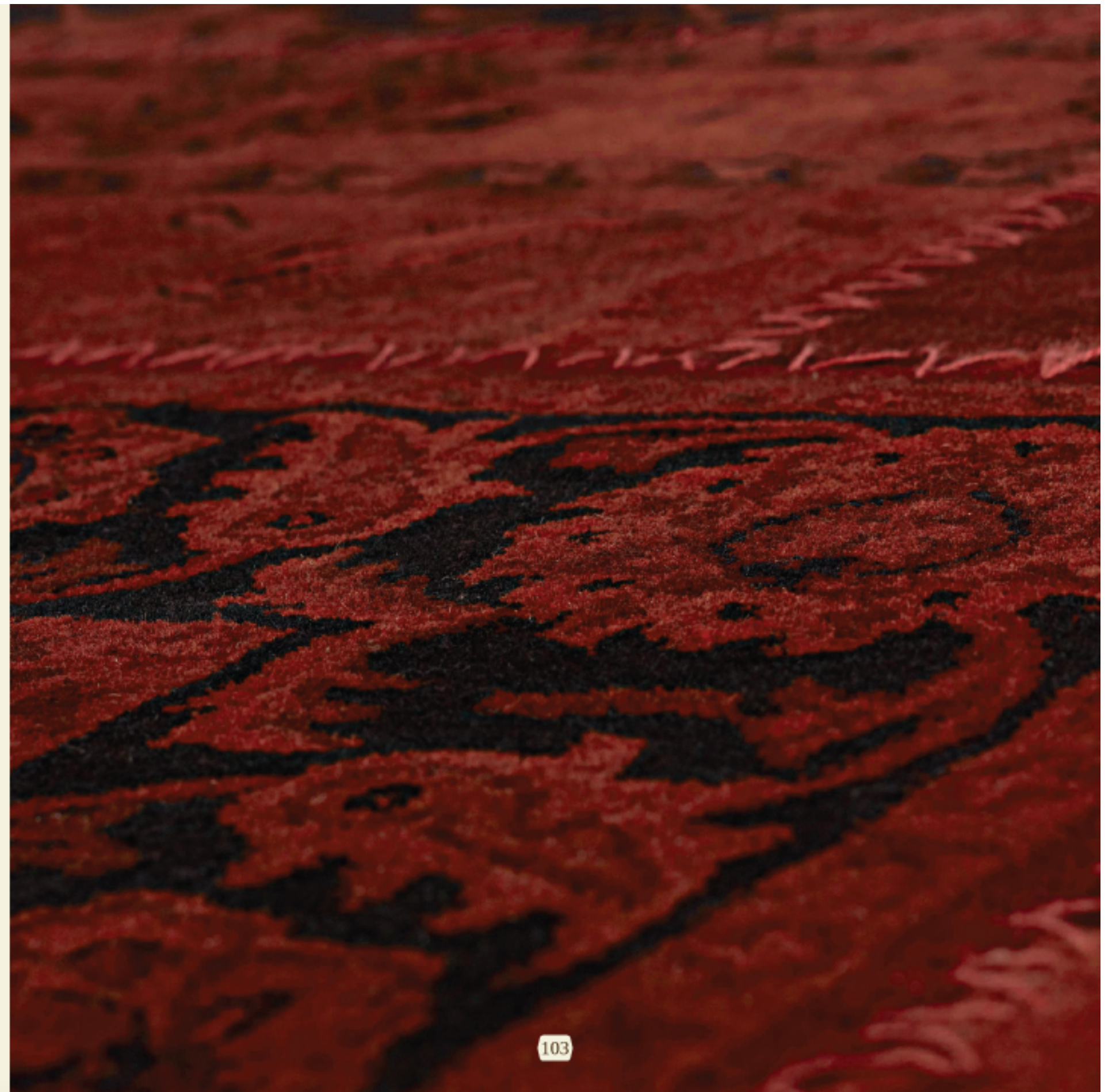


Carnation: Hand tufted in New Zealand wool





Cypress: Hand tufted in wool





Wingnut: Hand tufted in New Zealand wool and blended silk



Marigold: Hand tufted in New Zealand wool and blended silk



Clinton: Hand Tufted in Natural Wool

106



107

A photograph of a large, empty industrial building with a high ceiling and many wooden support pillars. In the foreground, a green velvet sofa with dark wood legs sits on a large, rectangular, yellowish-brown rug. The background shows a long perspective of the building's interior with light coming from arched windows on the left.

# Hand Woven Rugs



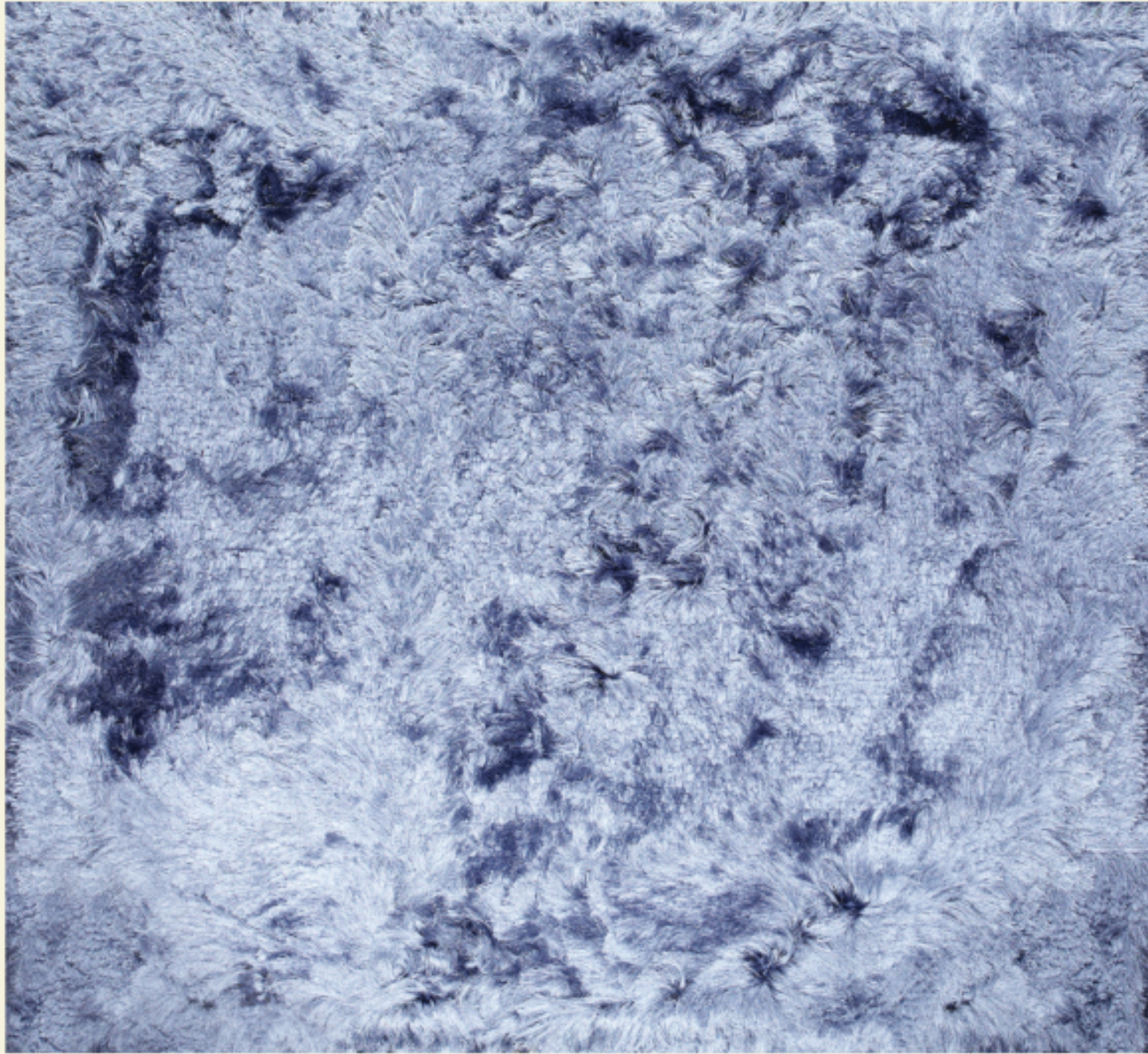
Tanoak: Hand woven in art silk





Dubai Vanilla: Hand woven in art silk





Lilac: Hand woven in art silk

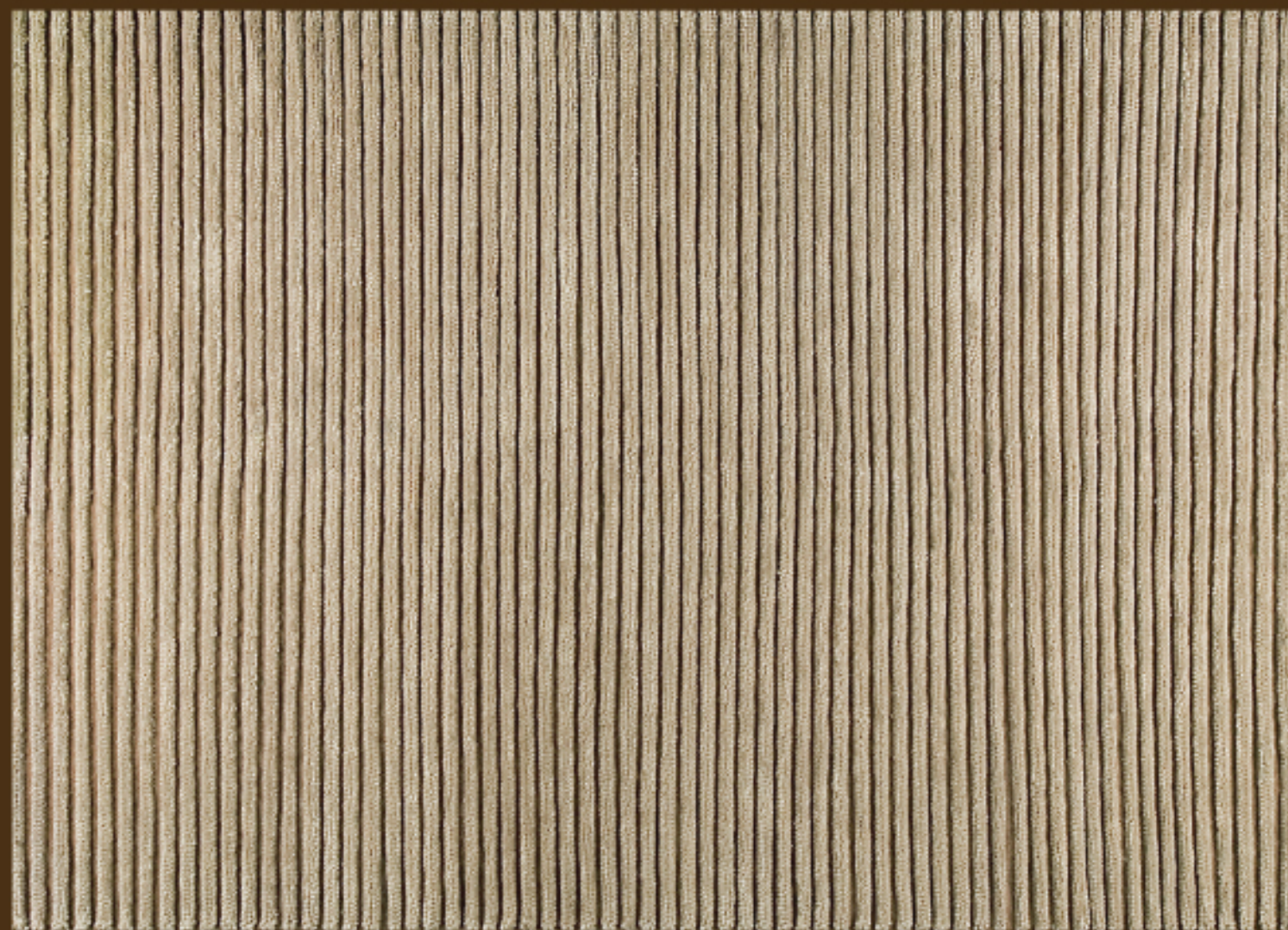




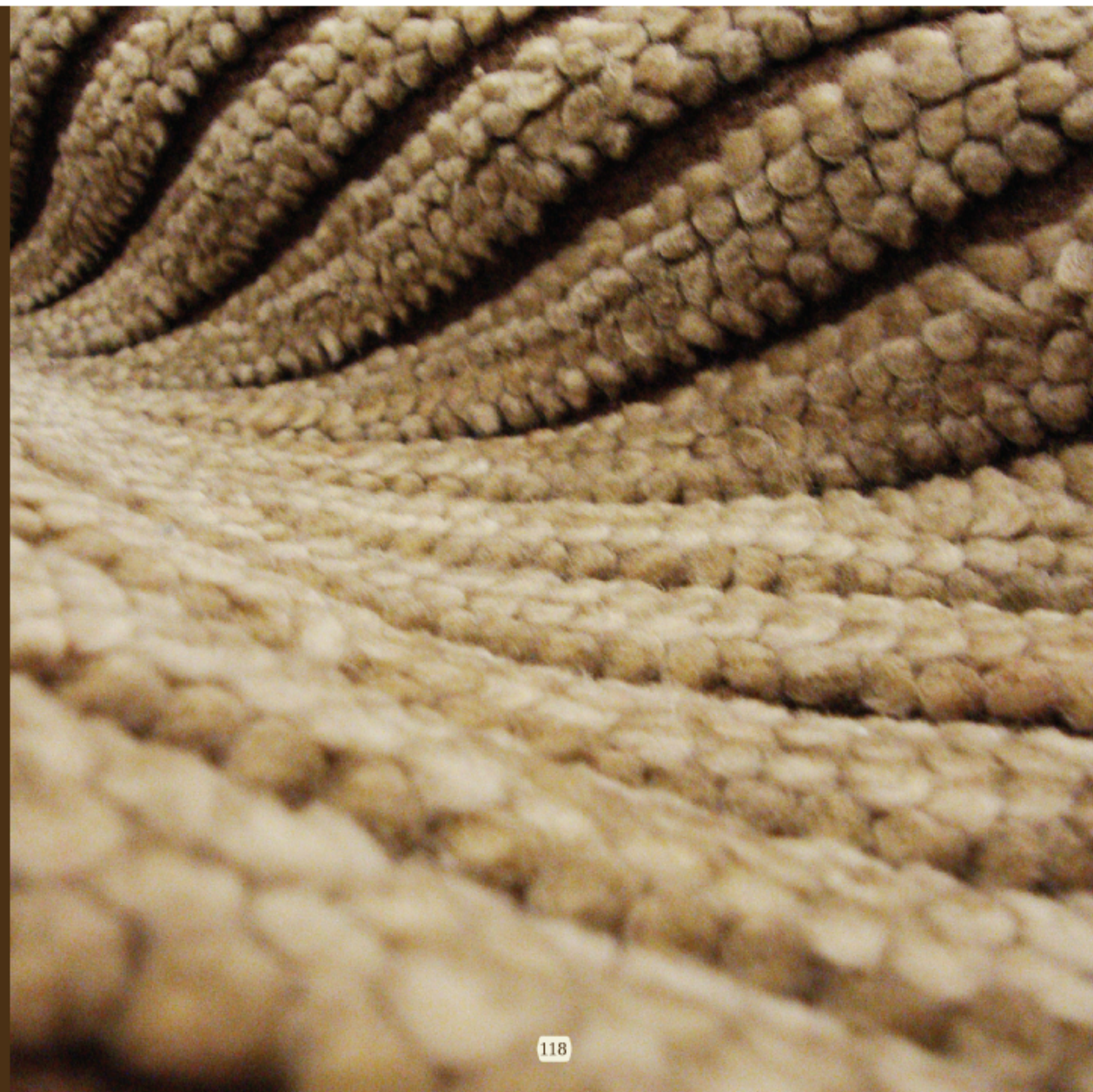
Nicotiana: Hand woven in hemp







Goa beige: Hand woven in New Zealand wool





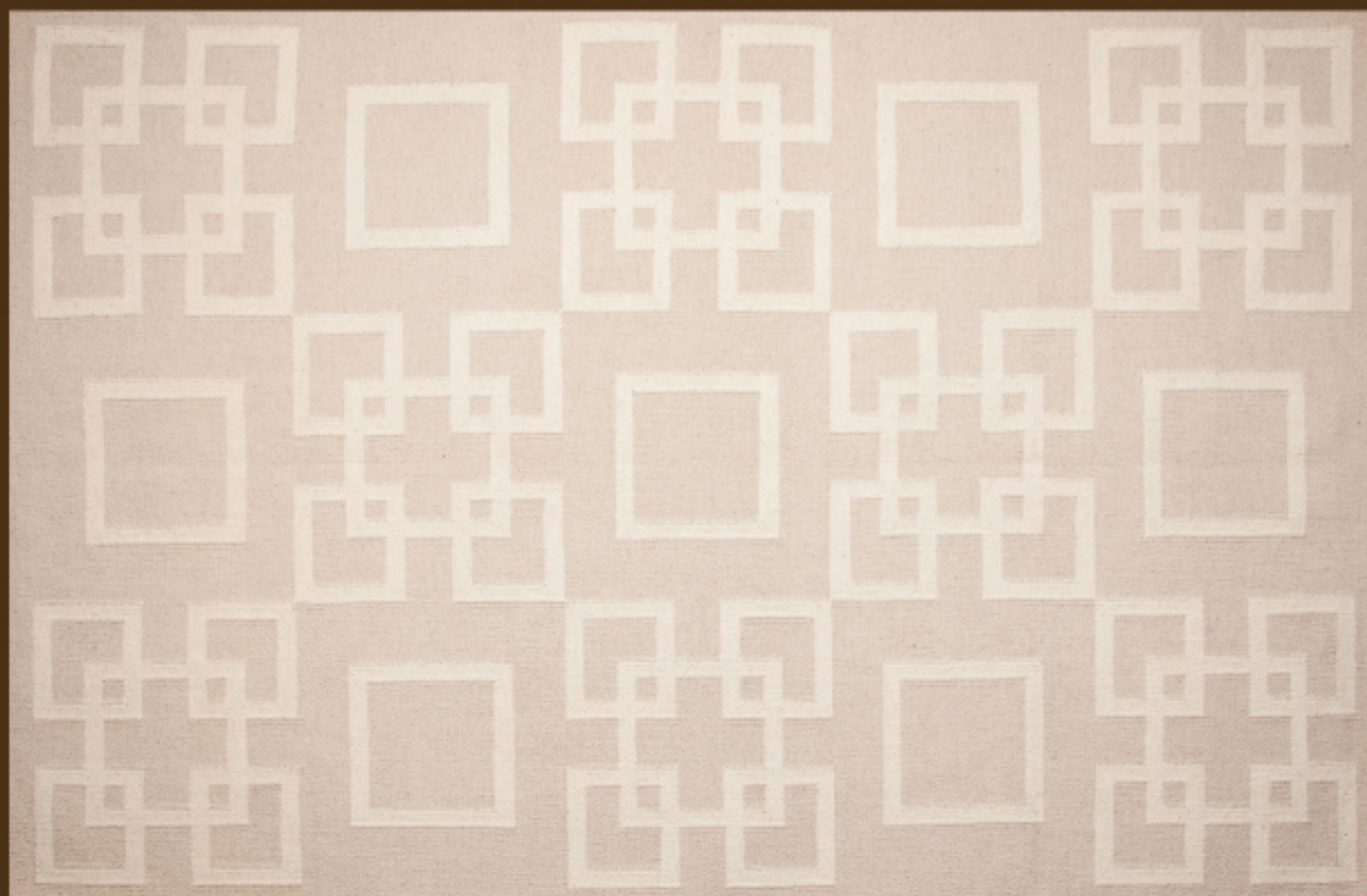
Alder: Handwoven in Wool and metallic yarn





Delphia: Handwoven in NewZealand Wool





Luma: Handwoven in NewZealand Wool





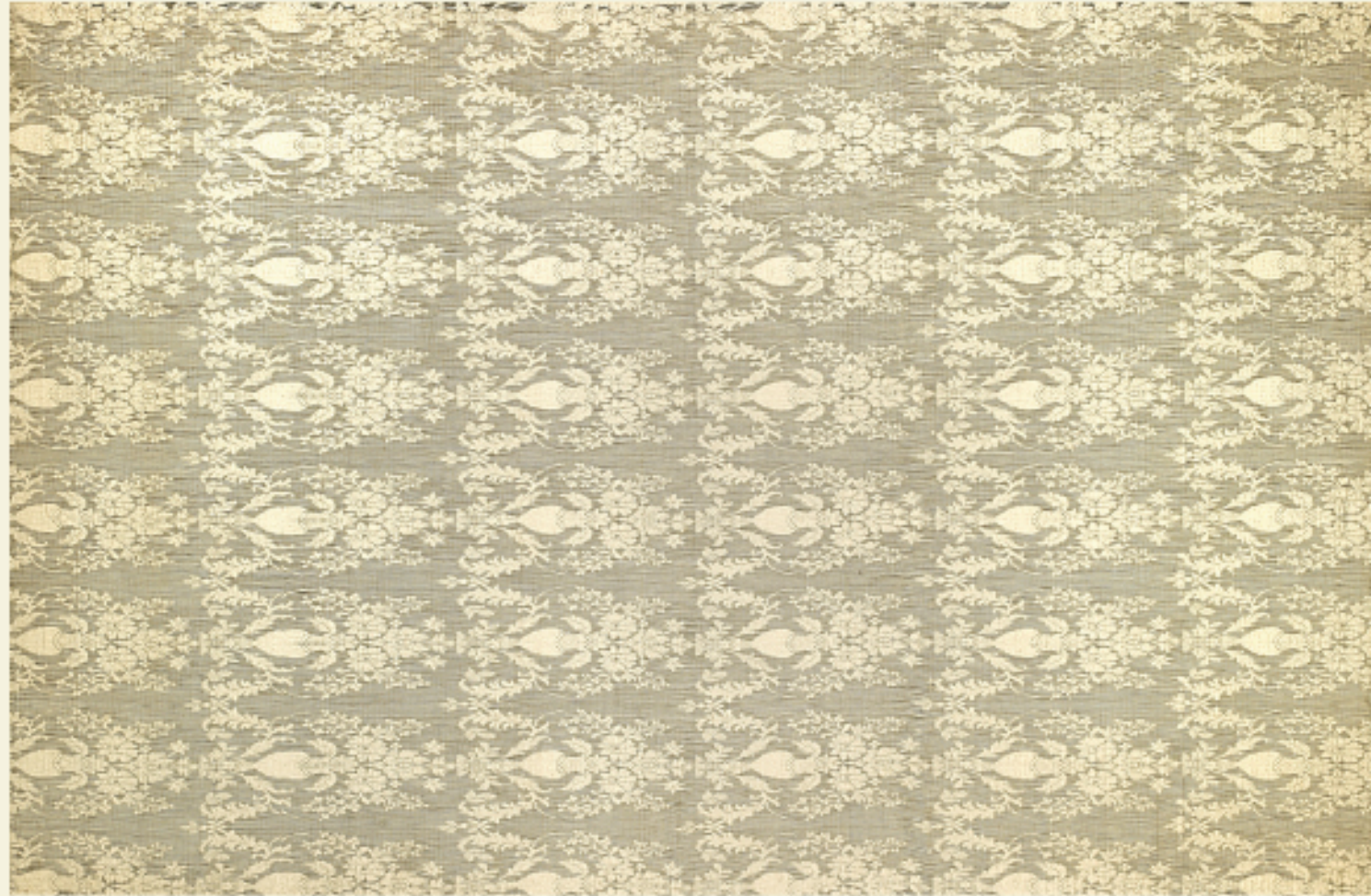
Tuberose: Handwoven in NewZealand Wool, Cotton and Hemp





Ice Plant: Hand woven in wool and metallic yarn



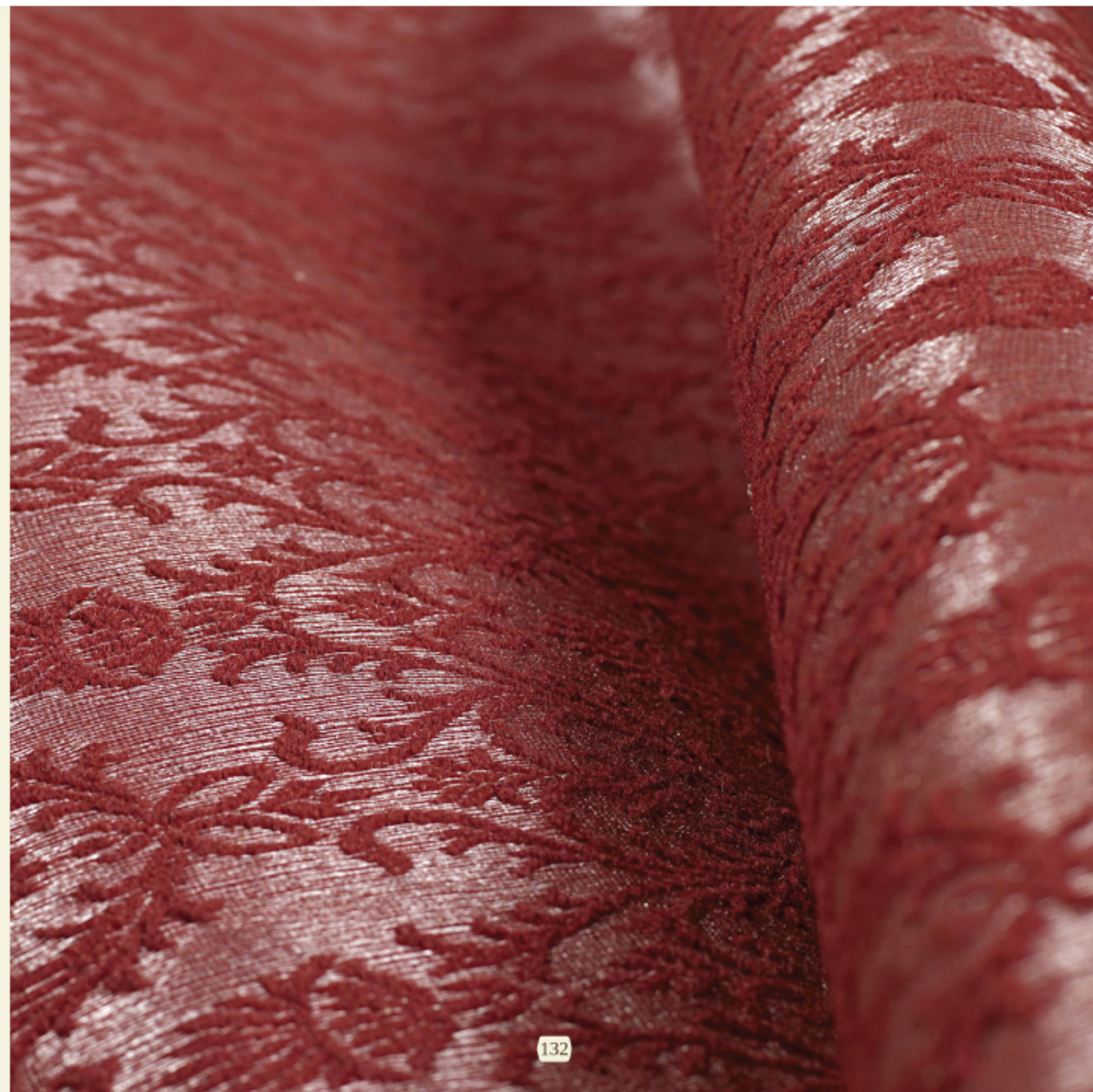


Fern: Hand woven in wool and metallic yarn

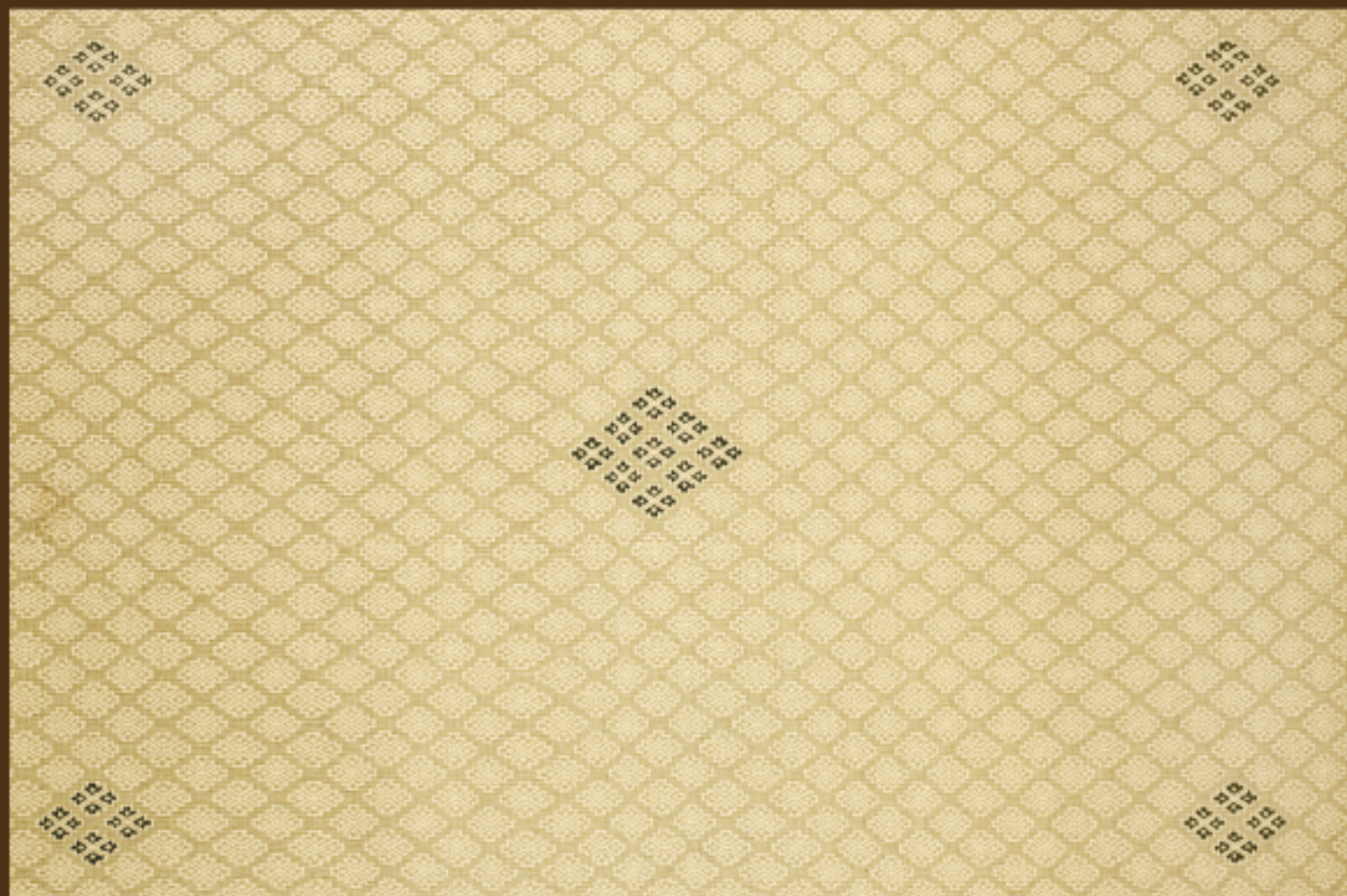




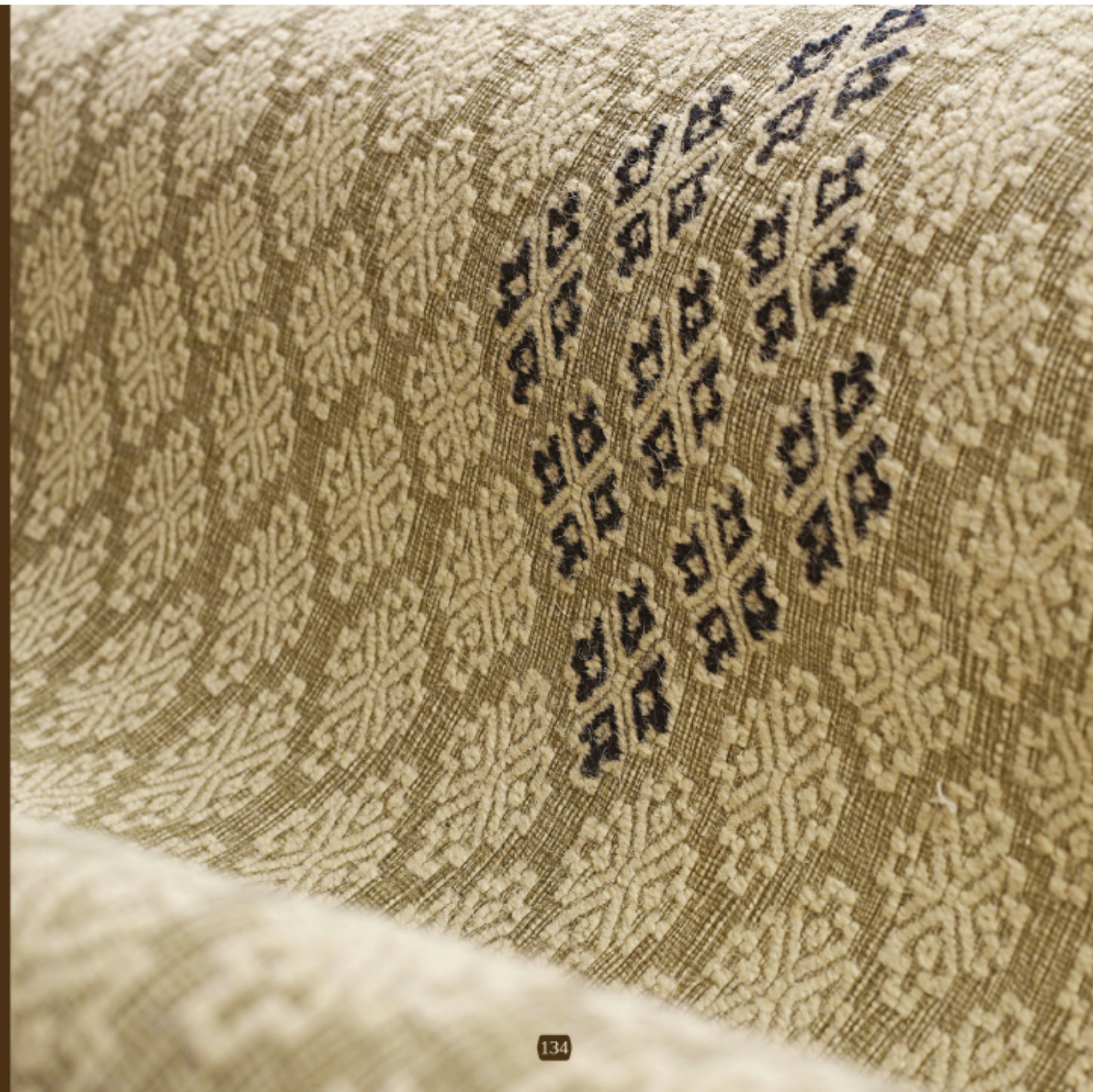
Clover: Hand woven in wool and metallic yarn







Waxflower: Hand woven in wool and metallic yarn





Bryony: Hand woven in wool and metallic yarn

